

Surface Mount Frequency Mixer

ADE-1ASK+ ADE-1ASK

Level 7 (LO Power +7 dBm) 2 to 600 MHz



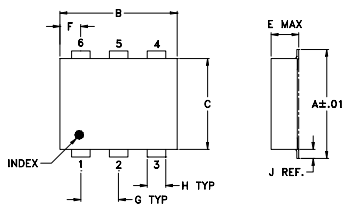
Maximum Ratings

Operating Temperature	-40°C to 85°C
Storage Temperature	-55°C to 100°C
RF Power	50mW
IF Current	40mA
Permanent damage may occur if any of these limits are exceeded.	

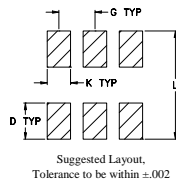
Pin Connections

LO	6
RF	3
IF	2
GROUND	1,4,5

Outline Drawing



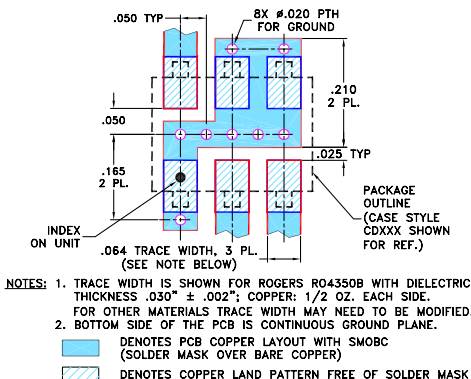
PCB Land Pattern



Outline Dimensions (inch/mm)

A	B	C	D	E	F	G
.272	.310	.220	.100	.112	.055	.100
6.91	7.87	5.59	2.54	2.84	1.40	2.54
H	J	K	L	wt		
.030	.026	.065	.300	grams		
0.76	0.66	1.65	7.62	0.20		

Demo Board MCL P/N: TB-03 Suggested PCB Layout (PL-052)



Features

- low conversion loss, 5.3 dB typ.
- excellent L-R isolation, 50 dB typ.
- low profile package
- aqueous washable
- protected by U.S. Patent 6,133,525

Applications

- VSAT systems
- instrumentation
- cellular

CASE STYLE: CD542
PRICE: \$3.95 ea. QTY (10-49)

+ RoHS compliant in accordance with EU Directive (2002/95/EC)

The +Suffix identifies RoHS Compliance. See our web site for RoHS Compliance methodologies and qualifications.

Electrical Specifications

FREQUENCY (MHz)	CONVERSION LOSS (dB)	LO-RF ISOLATION (dB)			LO-IF ISOLATION (dB)			IP3 at center band (dBm)						
		L	M	U	L	M	U							
2-600	DC-600	55	45	50	30	40	25	50	40	45	24	35	18	16

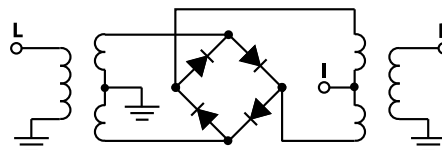
1 dB COMP.: +1 dBm typ.
Phase detection, positive polarity

L = low range [f_L to $10 f_L$] M = mid range [$10 f_L$ to $f_U/2$] U = upper range [$f_U/2$ to f_U]
m = mid band [$2f_L$ to $f_U/2$]

Typical Performance Data

Frequency (MHz)		Conversion Loss (dB)	Isolation L-R (dB)	Isolation L-I (dB)	VSWR RF Port (:1)	VSWR LO Port (:1)
RF	LO	LO +7dBm	LO +7dBm	LO +7dBm	LO +7dBm	LO +7dBm
1.00	31.00	6.13	67.70	64.10	1.38	2.58
2.00	32.00	5.68	67.90	64.20	1.22	2.55
2.18	32.18	5.68	67.90	64.00	1.21	2.52
4.73	34.73	5.45	66.90	64.10	1.12	2.55
10.29	40.29	5.40	66.00	63.10	1.09	2.52
22.37	52.37	5.49	63.30	61.10	1.07	2.52
48.66	78.66	5.44	59.70	57.50	1.04	2.52
105.82	135.82	5.42	54.50	52.40	1.00	2.52
230.13	260.13	5.49	48.90	47.20	1.05	2.61
500.50	530.50	5.96	46.80	38.20	1.25	2.88
556.00	586.00	6.18	47.40	36.40	1.20	2.92
600.00	630.00	6.29	45.90	35.20	1.21	2.96
611.50	641.50	6.31	45.10	35.00	1.21	2.88
667.00	697.00	6.43	42.60	31.90	1.26	3.21
722.50	752.50	6.81	41.00	30.90	1.38	3.01
778.00	808.00	6.93	38.60	29.20	1.58	3.21
833.50	863.50	7.22	36.80	28.10	1.78	3.38
889.00	919.00	7.46	35.20	28.60	1.99	3.16
944.50	974.50	7.58	33.10	26.60	2.25	3.64
1000.00	1030.00	7.83	30.70	24.00	2.49	3.64

Electrical Schematic



Mini-Circuits
ISO 9001 ISO 14001 AS 9100 CERTIFIED
IF/RF MICROWAVE COMPONENTS

For detailed performance specs & shopping online see web site

P.O. Box 350166, Brooklyn, New York 11235-0003 (718) 934-4500 Fax (718) 332-4661 The Design Engineers Search Engine Provides ACTUAL Data Instantly at minicircuits.com

Notes: 1. Performance and quality attributes and conditions not expressly stated in this specification sheet are intended to be excluded and do not form a part of this specification sheet. 2. Electrical specifications and performance data contained herein are based on Mini-Circuit's applicable established test performance criteria and measurement instructions. 3. The parts covered by this specification sheet are subject to Mini-Circuits standard limited warranty and terms and conditions (collectively, "Standard Terms"); Purchasers of this part are entitled to the rights and benefits contained therein. For a full statement of the Standard Terms and the exclusive rights and remedies thereunder, please visit Mini-Circuits' website at www.minicircuits.com/MCLStore/terms.jsp.

REV. E
M102713
ADE-1ASK
ED-6545
DJ/TD/CP
090917
Page 1 of 2

Performance Charts

