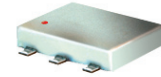


# Surface Mount Frequency Mixer

## ADE-25MH+ ADE-25MH

Level 13 (LO Power +13 dBm) 5 to 2500 MHz



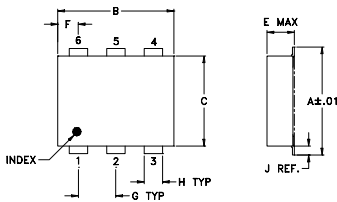
### Maximum Ratings

Operating Temperature	-40°C to 85°C
Storage Temperature	-55°C to 100°C
RF Power	200mW
IF Current	40mA
Permanent damage may occur if any of these limits are exceeded.	

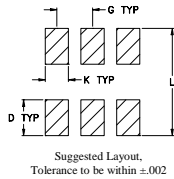
### Pin Connections

LO	6
RF	3
IF	2
GROUND	1,4,5

### Outline Drawing



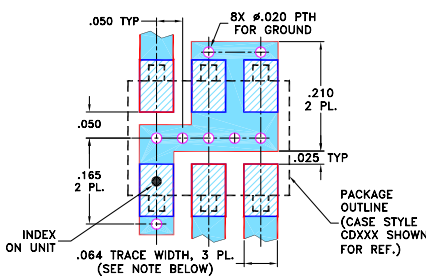
### PCB Land Pattern



### Outline Dimensions (inch/mm)

A	B	C	D	E	F	G
.272 6.91	.310 7.87	.220 5.59	.100 2.54	.112 2.84	.055 1.40	.100 2.54
H	J	K	L	wt		
.030 0.76	.026 0.66	.065 1.65	.300 7.62	grams 0.20		

### Demo Board MCL P/N: TB-03 Suggested PCB Layout (PL-052)



- NOTES: 1. TRACE WIDTH IS SHOWN FOR ROGERS RO4350B WITH DIELECTRIC THICKNESS .030" ± .002"; COPPER: 1/2 OZ. EACH SIDE. FOR OTHER MATERIALS TRACE WIDTH MAY NEED TO BE MODIFIED.  
2. BOTTOM SIDE OF THE PCB IS CONTINUOUS GROUND PLANE.

- DENOTES PCB COPPER LAYOUT WITH SMOBC (SOLDER MASK OVER BARE COPPER)
- DENOTES COPPER LAND PATTERN FREE OF SOLDER MASK

### Features

- low conversion loss, 6.9 dB typ.
- good L-R isolation, 34 dB typ.; L-I isolation, 32 dB typ.
- low profile package
- aqueous washable
- protected by U.S. Patent 6,133,525

### Applications

- PCS
- MMDS
- ISM
- instrumentation

CASE STYLE: CD542

PRICE: \$6.95 ea. QTY (10-49)

**+ RoHS compliant in accordance with EU Directive (2002/95/EC)**

The +Suffix identifies RoHS Compliance. See our web site for RoHS Compliance methodologies and qualifications.

### Electrical Specifications

FREQUENCY (MHz)	CONVERSION LOSS (dB)	LO-RF ISOLATION (dB)			LO-IF ISOLATION (dB)			IP3 at center band (dBm)					
		L	M	U	L	M	U						
5-2500	6.9	47	28	34	34	23	34	23	32	20	23	17	18

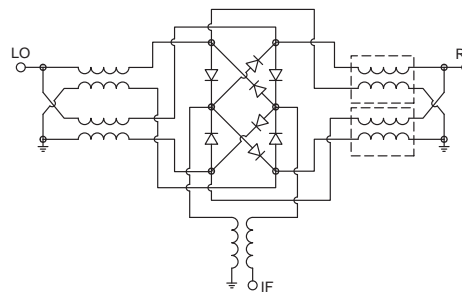
1 dB COMP.: +9 dBm typ.

L = low range [ $f_L$  to  $10 f_L$ ] M = mid range [ $10 f_L$  to  $f_U/2$ ] U = upper range [ $f_U/2$  to  $f_U$ ]  
m = mid band [ $2f_L$  to  $f_U/2$ ]

### Typical Performance Data

Frequency (MHz)	Conversion Loss (dB)	Isolation L-R (dB)	Isolation L-I (dB)	VSWR RF Port (:1)	VSWR LO Port (:1)	
						RF
5.00	35.00	7.36	49.90	34.20	1.35	2.37
25.00	55.00	6.76	51.40	34.10	1.20	2.32
75.00	105.00	6.54	54.00	33.90	1.20	2.25
100.00	130.00	6.52	52.70	34.00	1.19	2.30
250.00	280.00	7.05	42.40	33.80	1.10	2.18
500.00	530.00	7.02	35.40	31.50	1.10	2.16
884.28	914.28	7.09	32.20	27.50	1.55	1.91
1000.00	1030.00	7.22	32.20	26.30	1.64	1.91
1326.38	1356.38	7.87	33.40	24.70	2.37	1.84
1547.43	1577.43	7.39	35.80	24.00	2.40	1.81
1768.47	1798.47	7.30	38.90	23.00	2.16	1.78
2000.00	2030.00	7.30	40.00	23.30	2.04	1.63
2431.62	2461.62	7.45	39.50	24.20	2.18	1.30
3000.00	2970.00	7.66	31.10	24.50	2.20	1.56

### Electrical Schematic



**Mini-Circuits**  
INCORPORATED

minicircuits.com

P.O. Box 35708, Brooklyn, New York 11235-0008 (718) 339-4500 Fax (718) 339-4501 For detailed performance specs & shipping rates see Mini-Circuits web site



The Design Engineers Specialist Engine Provides ACTUAL Data directly from MFRS-CHECKED At: www.minicircuits.com

IF / RF MICROWAVE COMPONENTS

REV. F  
M102713  
ADE-25MH  
ED-6859/1  
DJ/TD/CP/AM  
070412  
Page 1 of 2

## Performance Charts

