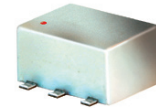


Surface Mount Frequency Mixer

ADE-6+ ADE-6

Level 7 (LO Power +7 dBm) 0.05 to 250 MHz



CASE STYLE: CD637
PRICE: \$4.95 ea. QTY (10-49)

Maximum Ratings

Operating Temperature	-40°C to 85°C
Storage Temperature	-55°C to 100°C
RF Power	50mW
IF Current	40mA

Permanent damage may occur if any of these limits are exceeded.

Pin Connections

LO	6
RF	3
IF	2
GROUND	1,4,5

Features

- low conversion loss, 4.6 dB typ.
- excellent L-R isolation, 40 dB typ.
- low profile package
- aqueous washable
- protected by U.S. Patent 6,133,525

Applications

- cellular

+ RoHS compliant in accordance with EU Directive (2002/95/EC)

The +Suffix identifies RoHS Compliance. See our web site for RoHS Compliance methodologies and qualifications.

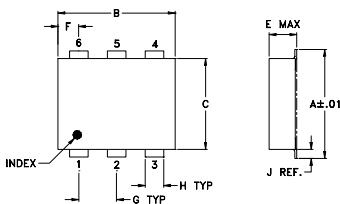
Electrical Specifications

FREQUENCY (MHz)	CONVERSION LOSS (dB)	LO-RF ISOLATION (dB)			LO-IF ISOLATION (dB)			IP3 at center band (dBm)						
		L	M	U	L	M	U							
0.05-250	DC-200	62	49	40	30	40	20	58	44	45	24	25	15	10

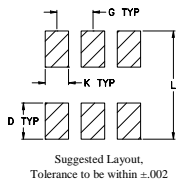
1 dB COMP.: +1 dBm typ.

L = low range [f_l to $10 f_l$]
M = mid range [$10 f_l$ to $f_u/2$]
U = upper range [$f_u/2$ to f_u]

Outline Drawing



PCB Land Pattern



Outline Dimensions (inch/mm)

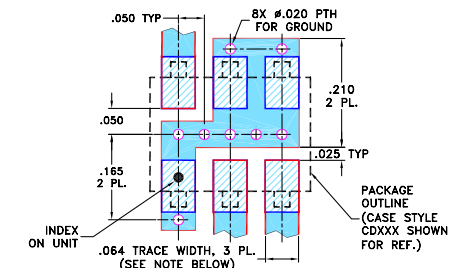
A	B	C	D	E	F	G
.272	.310	.220	.100	.206	.055	.100
6.91	7.87	5.59	2.54	5.23	1.40	2.54

H	J	K	L	wt
.030	.026	.065	.300	grams
0.76	0.66	1.65	7.62	0.40

Typical Performance Data

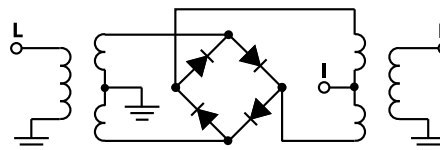
Frequency (MHz)		Conversion Loss (dB)	Isolation L-R (dB)	Isolation L-I (dB)	VSWR RF Port (:1)	VSWR LO Port (:1)
RF	LO	LO +7dBm	LO +7dBm	LO +7dBm	LO +7dBm	LO +7dBm
0.05	30.05	4.68	59.77	56.14	1.58	2.30
10.00	40.00	4.13	66.00	52.10	1.27	2.52
26.76	56.76	4.22	68.60	49.00	1.23	2.55
40.00	70.00	4.19	66.80	46.10	1.21	2.58
53.42	83.42	4.35	57.30	45.60	1.18	2.55
60.00	90.00	4.32	54.40	44.40	1.18	2.61
80.00	110.00	4.18	56.90	41.50	1.13	2.55
100.00	130.00	4.49	48.70	40.80	1.14	2.65
106.74	136.74	4.62	43.60	42.00	1.15	2.68
120.00	150.00	4.62	40.20	40.00	1.12	2.80
133.40	163.40	4.54	38.00	37.00	1.13	2.76
140.00	170.00	4.64	37.00	35.70	1.15	2.80
150.00	180.00	4.68	36.30	34.30	1.13	2.84
160.06	190.06	4.75	53.20	32.70	1.07	2.68
170.00	200.00	4.81	54.40	32.20	1.02	2.76
186.72	216.72	5.14	54.50	31.20	1.16	2.92
200.00	230.00	5.19	53.80	31.80	1.28	2.96
213.38	243.38	5.26	61.60	31.60	1.41	2.92
240.04	270.04	5.44	42.00	26.40	1.62	2.72
250.00	280.00	5.44	39.40	24.50	1.69	2.65

Demo Board MCL P/N: TB-03 Suggested PCB Layout (PL-052)



- NOTES: 1. TRACE WIDTH IS SHOWN FOR ROGERS R04350B WITH DIELECTRIC THICKNESS .030" ± .002"; COPPER: 1/2 OZ. EACH SIDE. FOR OTHER MATERIALS TRACE WIDTH MAY NEED TO BE MODIFIED.
2. BOTTOM SIDE OF THE PCB IS CONTINUOUS GROUND PLANE.
- DENOTES PCB COPPER LAYOUT WITH SMOBC (SOLDER MASK OVER BARE COPPER)
□ DENOTES COPPER LAND PATTERN FREE OF SOLDER MASK

Electrical Schematic



Mini-Circuits
ISO 9001 ISO 14001 AS 9100 CERTIFIED
IF/RF MICROWAVE COMPONENTS

For detailed performance specs & shopping online see web site

P.O. Box 350166, Brooklyn, New York 11235-0003 (718) 934-4500 Fax (718) 332-4661 The Design Engineers Search Engine Provides ACTUAL Data Instantly at minicircuits.com

Notes: 1. Performance and quality attributes and conditions not expressly stated in this specification sheet are intended to be excluded and do not form a part of this specification sheet. 2. Electrical specifications and performance data contained herein are based on Mini-Circuit's applicable established test performance criteria and measurement instructions. 3. The parts covered by this specification sheet are subject to Mini-Circuits standard limited warranty and terms and conditions (collectively, "Standard Terms"); Purchasers of this part are entitled to the rights and benefits contained therein. For a full statement of the Standard Terms and the exclusive rights and remedies thereunder, please visit Mini-Circuits' website at www.minicircuits.com/MCLStore/terms.jsp.

REV. C
M102713
ADE-6
ED-7383/2
DJ/TD/CP/AM
090917
Page 1 of 2

Performance Charts

