

# Surface Mount Matching Pad

# ALMP-5075+ ALMP-5075

50/75Ω

DC to 3000 MHz

## Maximum Ratings

Operating Temperature	-40°C to 85°C
Storage Temperature	-55°C to 100°C
RF Input Power	0.25W

Permanent damage may occur if any of these limits are exceeded.

## Pin Connections

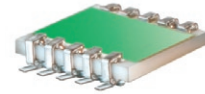
50 OHM	2
75 OHM	6
GROUND	1,3,4,5,7,8,9,10

## Features

- excellent flatness,  $\pm 0.1$  dB typ.
- excellent return loss, 1.2:1 typ.
- wideband coverage, DC to 3000 MHz
- aqueous washable
- low cost

## Applications

- 50 to 75 OHM wideband impedance matching

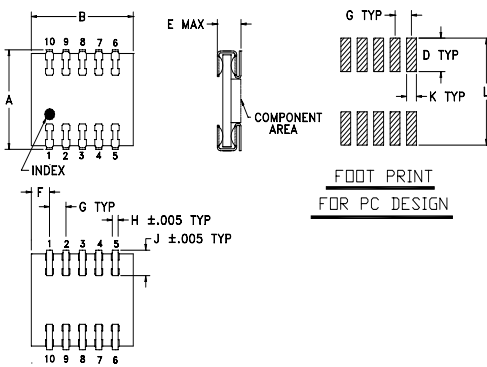


CASE STYLE: CB518  
PRICE: \$7.95 ea. QTY. (1-9)

+ RoHS compliant in accordance with EU Directive (2002/95/EC)

The +Suffix identifies RoHS Compliance. See our web site for RoHS Compliance methodologies and qualifications.

## Outline Drawing



## Outline Dimensions (inch/mm)

A	B	C	D	E	F	G			
.27	.31	--	.090	.080	.055	.050			
6.86	7.87	--	2.29	2.03	1.40	1.27			
H	J	K	L				wt		
.018	.074	.030	.290				grams		
0.46	1.88	0.76	7.37				0.3		

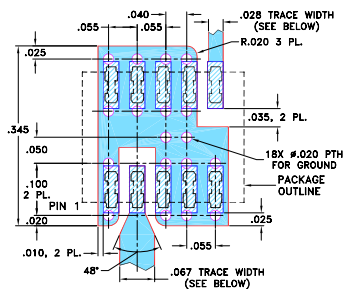
## Electrical Specifications

FREQ. (MHz)	Nom.	ATTENUATION (dB) Flatness Max.			VSWR (:1) Max.			POWER (W)
		DC-100 MHz	100-1000 MHz	1000-3000 MHz	DC-100 MHz	100-1000 MHz	1000-3000 MHz	
$f_L - f_U$								
DC-3000	5.7 $\pm$ 0.2	0.2	0.4	0.4	1.06	1.4	1.45	0.25

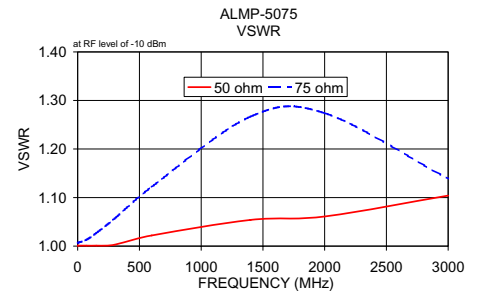
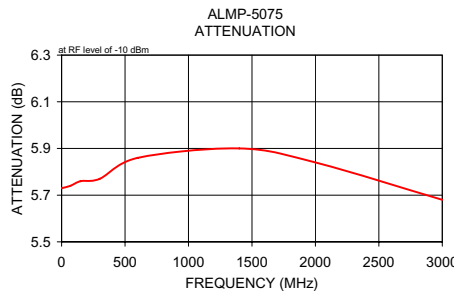
## Typical Performance Data

Frequency (MHz)	Attenuation (dB)	VSWR (:1)	
		50 Ω	75 Ω
0.03	5.73	1.00	1.01
0.10	5.73	1.00	1.01
1.00	5.73	1.00	1.01
70.00	5.74	1.00	1.01
150.00	5.76	1.00	1.03
300.00	5.77	1.00	1.06
600.00	5.86	1.02	1.12
1400.00	5.90	1.05	1.27
2000.00	5.84	1.06	1.27
3000.00	5.68	1.10	1.14

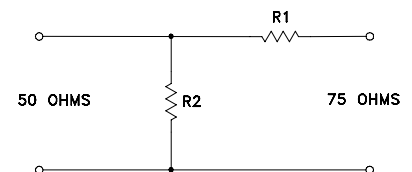
## Demo Board MCL P/N: TB-25 Suggested PCB Layout (PL-211)



- NOTE: 1. TRACE WIDTH IS SHOWN FOR ROGERS RO4350B WITH DIELECTRIC THICKNESS .030"  $\pm$  .002". COPPER: 1/2 OZ. EACH SIDE. FOR OTHER MATERIALS TRACE WIDTH MAY NEED TO BE MODIFIED. 2. BOTTOM SIDE OF THE PCB IS CONTINUOUS GROUND PLANE.
- DENOTES PCB COPPER LAYOUT WITH SMOBC (SOLDER MASK OVER BARE COPPER)
  - DENOTES COPPER LAND PATTERN FREE OF SOLDER MASK



## electrical schematic



**Mini-Circuits**  
ISO 9001 ISO 14001 AS 9100 CERTIFIED  
The Design Engineers Search Engine  
IF/RF MICROWAVE COMPONENTS

For detailed performance specs & shopping online see web site

P.O. Box 350166, Brooklyn, New York 11235-0003 (718) 934-4500 Fax (718) 332-4661 The Design Engineers Search Engine Provides ACTUAL Data Instantly at [minicircuits.com](http://minicircuits.com)

Notes: 1. Performance and quality attributes and conditions not expressly stated in this specification sheet are intended to be excluded and do not form a part of this specification sheet. 2. Electrical specifications and performance data contained herein are based on Mini-Circuit's applicable established test performance criteria and measurement instructions. 3. The parts covered by this specification sheet are subject to Mini-Circuits standard limited warranty and terms and conditions (collectively, "Standard Terms"); Purchasers of this part are entitled to the rights and benefits contained therein. For a full statement of the Standard Terms and the exclusive rights and remedies thereunder, please visit Mini-Circuits' website at [www.minicircuits.com/MCLStore/terms.jsp](http://www.minicircuits.com/MCLStore/terms.jsp).

REV. B  
M102713  
ED-7340/2  
ALMP-5075  
DJ/TD/CP  
070316