

# Bandpass Filter

## BPF-A332+

50Ω 329 to 335 MHz

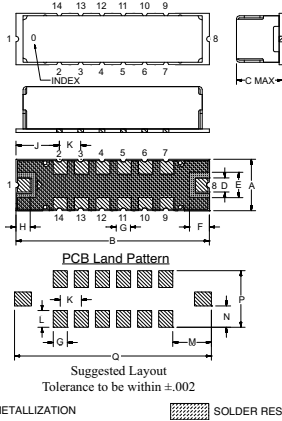
### Maximum Ratings

Operating Temperature	-40°C to 85°C
Storage Temperature	-55°C to 100°C
RF Power Input	0.5W at 25°C

### Pin Connections

RF IN	1
RF OUT	8
GROUND	2,3,4,5,6,7,9,10,11,12,13,14

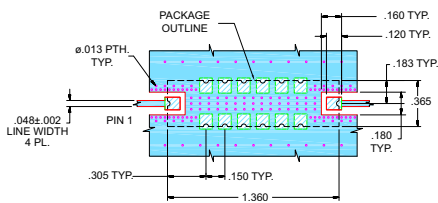
### Outline Drawing



### Outline Dimensions (inch/mm)

A	B	C	D	E	F	G	H
.365	1.360	.35	.100	.180	.140	.100	.100
9.27	34.54	8.89	2.54	4.57	3.58	2.54	2.54
J	K	L	M	N	P	Q	wt.
.305	.150	.120	.275	.152	.405	1.400	grams
7.75	3.81	3.05	6.99	3.87	10.29	35.65	4.0

### Demo Board MCL P/N: TB-363+ Suggested PCB Layout (PL-227)



- NOTES:
- TRACE WIDTH IS SHOWN FOR FR4 WITH DIELECTRIC THICKNESS: .025 ± .002. COPPER: 1/2 OZ. EACH SIDE. FOR OTHER MATERIALS TRACE WIDTH MAY NEED TO BE MODIFIED.
  - BOTTOM SIDE OF THE PCB IS CONTINUOUS GROUND PLANE.
  - Blue DENOTES PCB COPPER LAYOUT WITH SMOBC (SOLDER MASK OVER BARE COPPER)
  - Green DENOTES COPPER LAND PATTERN FREE OF SOLDER MASK



### Features

- Linear Phase, up to ±5 deg Typ @ Fc ± 7.5 MHz
- High Rejection
- Shielded case
- Aqueous washable

### Applications

- Radio communications
- Harmonic Rejection
- Transmitters / Receivers



CASE STYLE: HQ1157  
PRICE: \$34.95 ea. QTY (1-9)

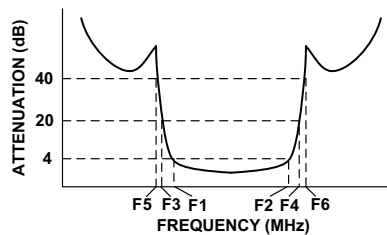
+ RoHS compliant in accordance with EU Directive (2002/95/EC)

The +Suffix has been added in order to identify RoHS Compliance. See our web site for RoHS Compliance methodologies and qualifications.

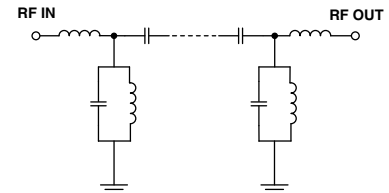
### Bandpass Filter Electrical Specifications (T<sub>AMB</sub> = 25°C)

CENTER FREQ. (MHz)	PASSBAND (MHz) (Loss < 4dB)	STOPBANDS (MHz)				MAXIMUM DEVIATION FROM LINEAR PHASE (deg.)	VSWR (:1)		
		Loss > 20dB		Loss > 40dB			Passband		Stopband
F <sub>c</sub>	F <sub>1</sub> - F <sub>2</sub>	F <sub>3</sub>	F <sub>4</sub>	F <sub>5</sub>	F <sub>6</sub>	F <sub>c</sub> ± 7.5MHz	Typ.	Max.	Typ.
332	329 - 335	305	365	290	385 - 2200	±10	1.4	1.8	20

### Typical Frequency Response

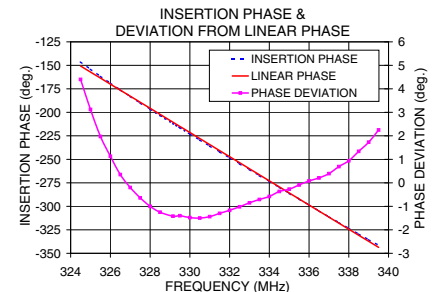
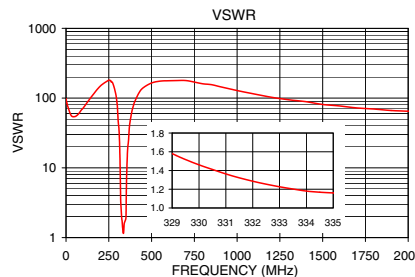


### Functional Schematic



### Typical Performance Data at 25°C

Frequency (MHz)	Insertion Loss (dB)	VSWR (:1)	Frequency (MHz)	Deviation from Linear Phase (deg.)
0.5	89.57	98.58	324.5	4.40
250	74.03	180.61	325.5	1.97
290	49.02	116.69	326.5	0.35
305	31.30	46.61	327.5	-0.64
310	24.00	33.56	328.5	-1.25
315	13.85	14.80	329.0	-1.42
319	7.12	3.76	329.5	-1.40
329	3.16	1.58	330.5	-1.50
332	3.01	1.29	331.5	-1.30
335	3.09	1.16	332.0	-1.17
345	6.86	1.73	332.5	-1.02
352	13.84	3.88	333.5	-0.71
355	19.43	8.82	334.5	-0.37
365	32.76	24.52	335.0	-0.27
385	49.98	64.49	335.5	-0.09
500	93.50	164.78	336.5	0.21
2000	61.85	64.67	338.5	1.34
2200	57.21	60.17	339.5	2.25



P.O. Box 350166, Brooklyn, New York 11235-0003 (718) 934-4500 Fax (718) 332-4661 For detailed performance specs & shopping online see Mini-Circuits web site



The Design Engineers Search Engine Provides ACTUAL Data Instantly From MINI-CIRCUITS At: [www.minicircuits.com](http://www.minicircuits.com)

RF/IF MICROWAVE COMPONENTS

REV. OR  
M119635  
EDR-9072AU  
BPF-A332+  
URJ/RAV  
080925  
Page 1 of 1