

# Surface Mount Frequency Mixer

## JMS-5H+ JMS-5H

Level 17 (LO Power +17 dBm) 5 to 1500 MHz



CASE STYLE: BH292  
PRICE: \$12.95 ea. QTY (1-9)

+ RoHS compliant in accordance  
with EU Directive (2002/95/EC)

The +Suffix identifies RoHS Compliance. See our web site  
for RoHS Compliance methodologies and qualifications.

### Maximum Ratings

Operating Temperature	-40°C to 85°C
Storage Temperature	-55°C to 100°C
RF Power	200mW
IF Current	40mA
Permanent damage may occur if any of these limits are exceeded.	

### Pin Connections

LO	6
RF	3
IF	2
GROUND	1,4,5

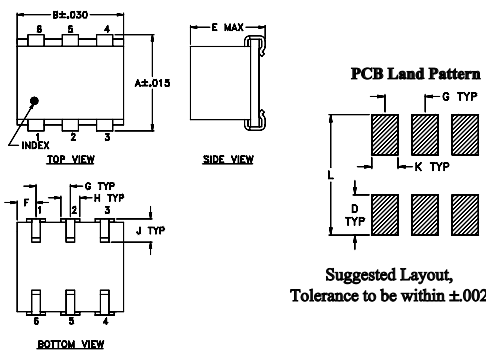
### Features

- low conversion loss, 5.9 dB typ.
- miniature surface mount
- J-leads for strain relief and excellent solderability

### Applications

- up & down converters for receivers & transmitters
- satellite distribution
- cellular/ISM/GSM

### Outline Drawing



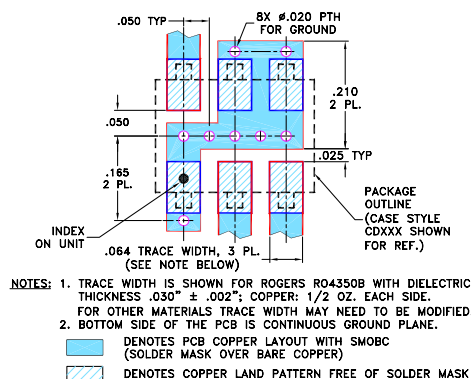
### Outline Dimensions (inch/mm)

A	B	C	D	E	F	G
.280	.310	--	.100	.225	.055	.100
7.11	7.87	--	2.54	5.72	1.40	2.54

H	J	K	L	wt
.047	.065	.065	.300	grams
1.19	1.65	1.65	7.62	0.45

### Demo Board MCL P/N: TB-03 Suggested PCB Layout (PL-052)



### Electrical Specifications

FREQUENCY (MHz)	CONVERSION LOSS (dB)	LO-RF ISOLATION (dB)			LO-IF ISOLATION (dB)			IP3 at center band (dBm)
		L	M	U	L	M	U	
5-1500	DC-1000	70	50	20	60	40	8	22

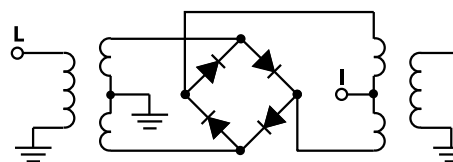
1 dB COMP: +14 dBm typ.  
Phase detection, positive polarity

L = low range [ $f_L$  to  $10 f_L$ ]  
M = mid band [ $2 f_L$  to  $f_U/2$ ]  
U = upper range [ $f_U/2$  to  $f_U$ ]

### Typical Performance Data

Frequency (MHz)		Conversion Loss (dB)	Isolation L-R (dB)	Isolation L-I (dB)	VSWR RF Port (:1)	VSWR LO Port (:1)
RF	LO	LO +17dBm	LO +17dBm	LO +17dBm	LO +17dBm	LO +17dBm
10.00	40.00	6.95	70.78	61.92	2.20	1.53
20.00	50.00	6.58	65.19	63.52	1.63	1.56
50.00	80.00	6.34	58.27	59.11	1.47	1.51
100.00	70.00	6.16	57.50	49.97	1.49	1.50
149.69	119.69	6.25	57.97	51.05	1.52	1.49
200.00	170.00	6.35	58.46	44.60	1.57	1.47
289.38	259.38	6.44	45.97	40.19	1.66	1.45
429.06	399.06	6.52	35.99	40.36	1.85	1.48
500.00	470.00	6.57	33.86	35.13	1.96	1.52
568.75	538.75	6.70	31.80	31.81	2.07	1.65
708.44	678.44	7.17	28.34	25.09	2.42	1.79
750.00	720.00	7.33	27.82	23.34	2.56	1.80
848.13	818.13	7.63	27.14	20.18	2.79	1.94
987.81	957.81	7.85	25.28	17.43	2.98	2.02
1000.00	970.00	7.86	25.09	16.91	3.00	2.12
1127.50	1097.50	7.96	23.28	14.89	3.16	2.21
1267.19	1237.19	8.09	21.51	13.36	3.15	2.57
1406.88	1376.88	8.10	20.40	11.73	2.97	2.82
1453.44	1423.44	8.28	20.09	11.57	2.99	2.97
1500.00	1470.00	8.50	19.62	11.46	2.94	3.15

### Electrical Schematic



**Mini-Circuits®**  
ISO 9001 ISO 14001 AS 9100 CERTIFIED

For detailed performance specs & shopping online see web site

P.O. Box 350166, Brooklyn, New York 11235-0003 (718) 934-4500 Fax (718) 332-4661 The Design Engineers Search Engine Provides ACTUAL Data Instantly at [minicircuits.com](http://minicircuits.com)

IF/RF MICROWAVE COMPONENTS

Notes: 1. Performance and quality attributes and conditions not expressly stated in this specification sheet are intended to be excluded and do not form a part of this specification sheet. 2. Electrical specifications and performance data contained herein are based on Mini-Circuits' applicable established test performance criteria and measurement instructions. 3. The parts covered by this specification sheet are subject to Mini-Circuits standard limited warranty and terms and conditions (collectively, "Standard Terms"); Purchasers of this part are entitled to the rights and benefits contained therein. For a full statement of the Standard Terms and the exclusive rights and remedies thereunder, please visit Mini-Circuits' website at [www.minicircuits.com/MCLStore/terms.jsp](http://www.minicircuits.com/MCLStore/terms.jsp).

REV. B  
M102713  
JMS-5H  
ED-3495  
DJ/CP/AM  
061228  
Page 1 of 2

## Performance Charts

