

Surface Mount Low Pass Filter

LPF-B35+

50Ω DC to 35 MHz

The Big Deal

- Low Insertion loss
- High rejection
- Fast roll-off
- Miniature shielded package



CASE STYLE: HZ1198

Product Overview

The LPF-B35+ is a lowpass filter in a shielded package (size of 0.472" x 0.826" x .22") fabricated using SMT technology. Covering DC-35 MHz band width, these units offer good matching within the passband and high rejection. This unit uses a miniature high Q capacitors and wire welded inductors for high reliability. In addition it has repeatable performance across production lots and consistent performance across temperature.

Key Features

Feature	Advantages
Low passband insertion loss	Low insertion loss will be used in designs optimized for high performance applications.
Fast roll-off	Provides very good adjacent band rejection.



For detailed performance specs
& shopping online see web site

P.O. Box 350166, Brooklyn, New York 11235-0003 (718) 934-4500 Fax (718) 332-4661 The Design Engineers Search Engine  Provides ACTUAL Data Instantly at minicircuits.com

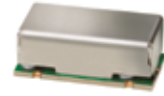
IF/RF MICROWAVE COMPONENTS

Notes: 1. Performance and quality attributes and conditions not expressly stated in this specification sheet are intended to be excluded and do not form a part of this specification sheet. 2. Electrical specifications and performance data contained herein are based on Mini-Circuit's applicable established test performance criteria and measurement instructions. 3. The parts covered by this specification sheet are subject to Mini-Circuits standard limited warranty and terms and conditions (collectively, "Standard Terms"); Purchasers of this part are entitled to the rights and benefits contained therein. For a full statement of the Standard Terms and the exclusive rights and remedies thereunder, please visit Mini-Circuits' website at www.minicircuits.com/MCLStore/terms.jsp.

Surface Mount Low Pass Filter

LPF-B35+

50Ω DC to 35 MHz



CASE STYLE: HZ1198
PRICE: \$16.95 ea. QTY (1-9)

Features

- High rejection
- Sharp insertion loss roll-off
- Shielded case
- Aqueous washable

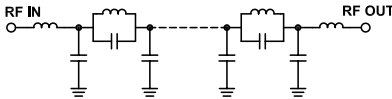
Electrical Specifications at 25°C

Parameter	F#	Frequency (MHz)	Min.	Typ.	Max.	Unit	
Pass Band	Insertion Loss	DC-F1	DC-35	—	0.85	2	dB
	Freq. Cut-Off	F2	40	—	3	—	dB
	VSWR	DC-F1	DC-35	—	1.5	2	:1
Stop Band	Rejection Loss	F3-F4	45-2500	20	30	—	dB
	VSWR	F3-F4	45-2500	—	15	—	:1

Applications

- Defence communications
- Transmitters / receivers
- Harmonic rejection

Functional Schematic



Maximum Ratings

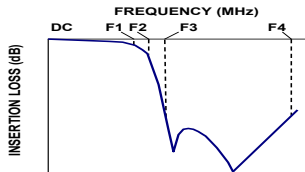
Operating Temperature	-40°C to 85°C
Storage Temperature	-55°C to 100°C
RF Power Input	1 W max.

Permanent damage may occur if any of these limits are exceeded.

Typical Performance Data at 25°C

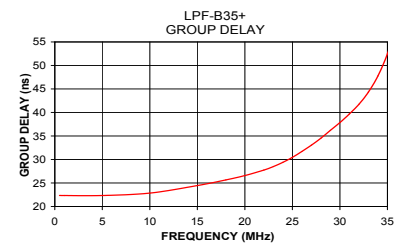
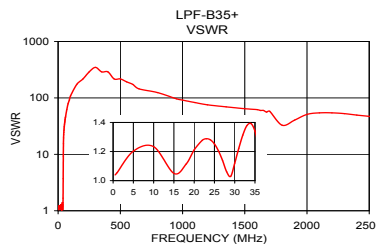
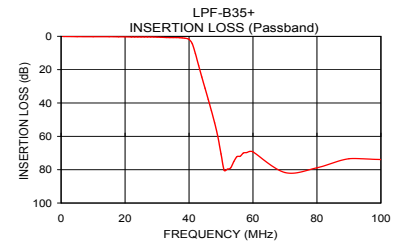
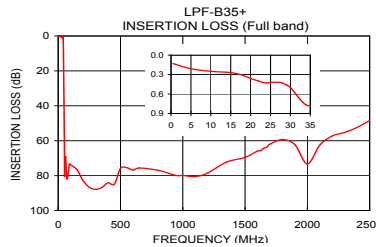
Frequency (MHz)	Insertion Loss (dB)	VSWR (:1)	Frequency (MHz)	Group Delay (nsec)
0.5	0.13	1.04	1.00	22.33
5.0	0.21	1.20	5.00	22.33
10.0	0.25	1.23	10.00	22.85
20.0	0.36	1.21	15.00	24.45
30.0	0.50	1.12	18.00	25.65
35.0	0.78	1.34	20.00	26.58
40.0	1.82	1.67	22.00	27.74
42.0	10.39	9.33	23.00	28.50
44.0	24.43	19.54	24.00	29.39
45.0	31.15	22.29	25.00	30.44
46.0	37.80	24.48	26.00	31.70
48.0	51.90	28.03	27.00	33.05
50.0	70.55	31.60	28.00	34.52
70.0	81.69	62.05	29.00	36.19
100.0	73.91	108.58	30.00	37.85
500.0	75.80	217.15	31.00	39.69
1000.0	79.89	91.43	32.00	41.73
1500.0	69.55	64.35	33.00	44.33
2000.0	73.28	51.10	34.00	47.77
2500.0	48.48	46.96	35.00	52.47

Typical Frequency Response



+ RoHS compliant in accordance with EU Directive (2002/95/EC)

The +Suffix has been added in order to identify RoHS Compliance. See our web site for RoHS Compliance methodologies and qualifications.



Mini-Circuits®
ISO 9001 ISO 14001 AS 9100 CERTIFIED
IFIRF MICROWAVE COMPONENTS

For detailed performance specs & shipping online see web site

P.O. Box 350166, Brooklyn, New York 11235-0003 (718) 934-4500 Fax (718) 332-4661 The Design Engineers Search Engine Provides ACTUAL Data Instantly at minicircuits.com

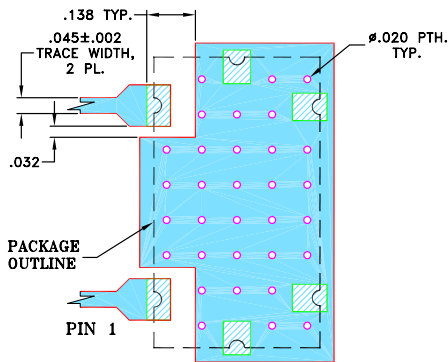
Notes: 1. Performance and quality attributes and conditions not expressly stated in this specification sheet are intended to be excluded and do not form a part of this specification sheet. 2. Electrical specifications and performance data contained herein are based on Mini-Circuit's applicable established test performance criteria and measurement instructions. 3. The parts covered by this specification sheet are subject to Mini-Circuits standard limited warranty and terms and conditions (collectively, "Standard Terms"); Purchasers of this part are entitled to the rights and benefits contained therein. For a full statement of the Standard Terms and the exclusive rights and remedies thereunder, please visit Mini-Circuits' website at www.minicircuits.com/MCLStore/terms.jsp.

REV. OR
M131661
LPF-B35+
EDR-10130AU
URJ
120425
Page 2 of 3

Pad Connections

INPUT	1
OUTPUT	2
GROUND	3,4,5,6

Demo Board MCL P/N: TB-400+ Suggested PCB Layout (PL-247)

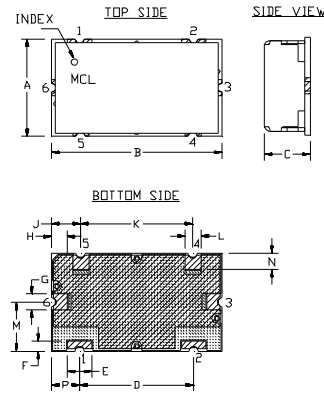


NOTES:

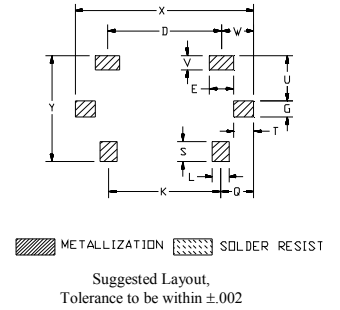
- TRACE WIDTH IS SHOWN FOR FR4 WITH DIELECTRIC THICKNESS .025"±.002". COPPER: 1/2 OZ. EACH SIDE.
FOR OTHER MATERIALS TRACE WIDTH MAY NEED TO BE MODIFIED.
- BOTTOM SIDE OF THE PCB IS CONTINUOUS GROUND PLANE.

- DENOTES PCB COPPER LAYOUT WITH SMOBC (SOLDER MASK OVER BARE COPPER)
- DENOTES COPPER LAND PATTERN FREE OF SOLDERMASK

Outline Drawing



PCB Land Pattern



Outline Dimensions (Inch / mm)

A	B	C	D	E	F	G	H	J	K	L	M
.472	.826	.220	.551	.118	.047	.078	.076	.142	.543	.078	.236
11.99	20.98	5.59	14.00	3.00	1.19	1.98	1.93	3.61	13.79	1.98	5.99
N	P	Q	S	T	U	V	W	X	Y		wt
.079	.138	.162	.098	.096	.217	.067	.157	.866	.512		grams
2.01	3.51	4.11	2.49	2.44	5.51	1.70	3.99	22.00	13.00		6.0