

Surface Mount Frequency Mixer

LRMS-5+ LRMS-5

Level 7 (LO Power +7dBm) 5 to 1500 MHz



Maximum Ratings

Operating Temperature	-40°C to 85°C
Storage Temperature	-55°C to 100°C
RF Power	50mW
IF Current	40mA
Permanent damage may occur if any of these limits are exceeded.	

Pin Connections

LO	1
RF	4
IF	5
GROUND	2,3,6

Features

- low conversion loss, 5.92 dB typ.
- excellent L-R isolation, 40 dB typ.

Applications

- VHF/UHF
- satellite distribution
- cellular

CASE STYLE: QQQ130

PRICE: \$13.95 ea. QTY (1-9)

+ RoHS compliant in accordance with EU Directive (2002/95/EC)

The +Suffix identifies RoHS Compliance. See our web site for RoHS Compliance methodologies and qualifications.

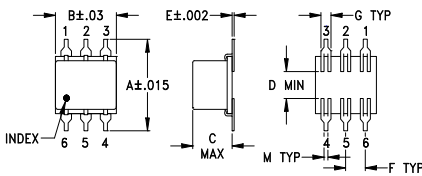
Electrical Specifications

FREQUENCY (MHz)	CONVERSION LOSS (dB)	LO-RF ISOLATION (dB)			LO-IF ISOLATION (dB)			IP3 at center band (dBm)						
		L	M	U	L	M	U							
5-1500	DC-1000	60	40	40	20	30	18	55	30	30	18	15	8	12

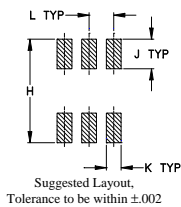
1 dB COMP.: +1 dBm typ.

L = low range [f_l to $10 f_l$] M = mid range [$10 f_l$ to $f_u/2$] U = upper range [$f_u/2$ to f_u]
m = mid band [$2 f_l$ to $f_u/2$]

Outline Drawing



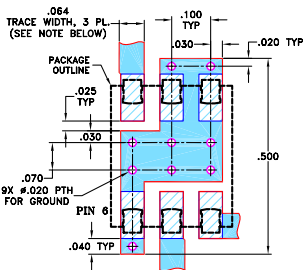
PCB Land Pattern



Outline Dimensions (inch/mm)

A	B	C	D	E	F	G	wt
.400	.31	.200	.10	.010	.100	.050	grams
10.16	7.87	5.08	2.54	0.25	2.54	1.27	0.55
H	J	K	L	M			
.420	.120	.060	.100	.020			
10.67	3.05	1.52	2.54	0.51			

Demo Board MCL P/N: TB-44+ Suggested PCB Layout (PL-083)

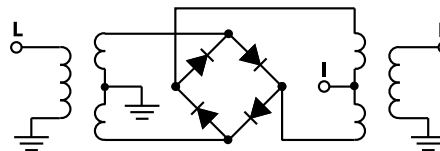


- NOTES: 1. TRACE WIDTH IS SHOWN FOR ROGERS RO4350B WITH DIELECTRIC THICKNESS 0.030" ± 0.002"; COPPER: 1/2 OZ. EACH SIDE. FOR OTHER MATERIALS TRACE WIDTH MAY NEED TO BE MODIFIED.
2. BOTTOM SIDE OF THE PCB IS CONTINUOUS GROUND PLANE.
3. DENOTES PCB COPPER LAYOUT WITH SMOBC (SOLDER MASK OVER BARE COPPER)
4. DENOTES COPPER LAND PATTERN FREE OF SOLDER MASK

Typical Performance Data

Frequency (MHz)		Conversion Loss (dB)	Isolation L-R (dB)	Isolation L-I (dB)	VSWR RF Port (:1)	VSWR LO Port (:1)
RF	LO	LO +7dBm	LO +7dBm	LO +7dBm	LO +7dBm	LO +7dBm
5.00	35.00	6.17	78.28	82.08	2.64	2.43
10.00	40.00	6.03	73.09	75.39	1.62	2.43
20.00	50.00	5.86	67.43	67.33	1.37	2.37
50.00	80.00	5.46	60.16	61.16	1.27	2.46
100.00	70.00	5.31	53.66	53.86	1.29	2.38
149.68	119.68	5.33	50.07	50.77	1.34	2.33
200.00	170.00	5.37	47.54	48.24	1.40	2.28
246.13	216.13	5.54	45.92	48.66	1.48	2.29
342.58	312.58	5.71	43.07	48.72	1.68	2.29
439.03	409.03	5.77	40.76	43.78	1.93	2.33
500.00	470.00	5.97	39.74	38.41	2.10	2.41
583.71	553.71	6.25	39.21	33.19	2.36	2.48
680.16	650.16	6.55	38.34	29.32	2.71	2.69
750.00	720.00	6.89	37.60	26.77	2.92	2.80
873.07	843.07	7.45	36.91	21.63	3.32	3.09
1000.00	970.00	7.70	35.50	18.14	3.56	3.20
1114.19	1084.19	7.76	33.72	16.32	3.69	3.18
1210.65	1180.65	8.02	32.50	14.96	3.73	3.19
1355.32	1325.32	8.41	30.92	13.25	3.75	3.12
1500.00	1470.00	8.83	28.64	12.28	3.83	2.98

Electrical Schematic



Mini-Circuits®
ISO 9001 ISO 14001 AS 9100 CERTIFIED
The Design Engineers Search Engine Provides ACTUAL Data Instantly at minicircuits.com
IF/RF MICROWAVE COMPONENTS

For detailed performance specs & shopping online see web site

P.O. Box 350166, Brooklyn, New York 11235-0003 (718) 934-4500 Fax (718) 332-4661

Notes: 1. Performance and quality attributes and conditions not expressly stated in this specification sheet are intended to be excluded and do not form a part of this specification sheet. 2. Electrical specifications and performance data contained herein are based on Mini-Circuit's applicable established test performance criteria and measurement instructions. 3. The parts covered by this specification sheet are subject to Mini-Circuit's standard limited warranty and terms and conditions (collectively, "Standard Terms"); Purchasers of this part are entitled to the rights and benefits contained therein. For a full statement of the Standard Terms and the exclusive rights and remedies thereunder, please visit Mini-Circuit's website at www.minicircuits.com/MCLStore/terms.jsp.

REV. B
M102713
LRMS-5
DJ/FL/CP/AM
070521
Page 1 of 2

Performance Charts

