

# ULTRA·REL<sup>®</sup> Ceramic Hermetic Frequency Mixers

## MAC Series

300 MHz to 12 GHz LO Levels 4 to 17 dBm

### The Big Deal

- 3-Year Guarantee
- Hermetically sealed LTCC construction
- Low-profile case, 0.06" high
- Priced for outstanding VALUE



CASE STYLE: DZ1650

### Product Overview

Mini-Circuits MAC mixers employ a unique new design and a highly repeatable, tightly controlled, automated process that delivers industry-leading reliability at a remarkably affordable price. Schottky diode quads meeting our strict specifications are bonded to a multilayer integrated LTCC substrate, and then hermetically sealed under a controlled atmosphere with gold-plated covers and eutectic AuSn solder. These passive, double-balanced mixers have been tested to MIL requirements for gross leak, fine leak, thermal shock, vibration, acceleration, mechanical shock, and HTOL, and every MAC mixer is backed with our 3-year guarantee.

[Click here for more about the MAC mixer](#)

### Key Features

Feature	Advantages
Low, Flat Conversion Loss	No need to compensate for variations over frequency.
Hermetically Sealed	Ideal for use anywhere long-term reliability adds bottom-line value: high moisture areas, busy production lines, high-speed distribution centers, heavy industry, outdoor settings, and unmanned facilities, as well as military applications.
Rugged LTCC/Hermetic Construction	Demonstrated reliability in harsh, physically abusive environments with high vibration, acceleration, and/or mechanical shock.
Wide Operating Temperature Range	Guaranteed performance from -55 to +125°C. MAC mixers have also passed thermal shock testing from -55 to +150°C, through 1000 cycles, 15 minutes per cycle.
Exposed Termination Ends	Our unique case design allows for easy visual inspection of side solder fillets per IPC-A-610 section 8.3.4.6, and features gold-plated terminations for excellent solderability.
Incredible Performance/Price	Game-changing affordability brings Hi-Rel hermetic mixers within the reach of commercial budgets.



P.O. Box 350166, Brooklyn, New York 11235-0003 (718) 934-4500 Fax (718) 332-4661 *The Design Engineers Search Engine* Provides ACTUAL Data Instantly at [minicircuits.com](http://minicircuits.com)

IF/RF MICROWAVE COMPONENTS

For detailed performance specs & shopping online see web site

**Notes:** 1. Performance and quality attributes and conditions not expressly stated in this specification sheet are intended to be excluded and do not form a part of this specification sheet. 2. Electrical specifications and performance data contained herein are based on Mini-Circuit's applicable established test performance criteria and measurement instructions. 3. The parts covered by this specification sheet are subject to Mini-Circuits standard limited warranty and terms and conditions (collectively, "Standard Terms"); Purchasers of this part are entitled to the rights and benefits contained therein. For a full statement of the Standard Terms and the exclusive rights and remedies thereunder, please visit Mini-Circuits' website at [www.minicircuits.com/MCLStore/terms.jsp](http://www.minicircuits.com/MCLStore/terms.jsp).

# Ceramic, Hermetically Sealed Frequency Mixer WIDE BAND

## MAC-80H+

Level 17 (LO Power+17 dBm) 2800 to 8000 MHz



CASE STYLE: DZ1650  
PRICE: \$8.95 ea. QTY (10)

### Maximum Ratings

Operating Temperature	-55°C to 125°C
Storage Temperature	-65°C to 150°C
RF Power	100 mW
IF Current	40 mA

Permanent damage may occur if any of these limits are exceeded.

### Pin Connections

LO	10
RF	5
IF	3
GROUND	1,2,4,6,7,8,9

### Features

- wide bandwidth, 2800 to 8000 MHz
- low conversion loss, 6.0 dB typ.
- high L-R isolation, 29 dB typ.
- LTCC double balanced mixer
- aqueous washable
- low cost
- low profile, 0.060"
- protected by US Patent 7,027,795
- **3-YEAR GUARANTEE - The Most Reliable Mixers**

### Applications

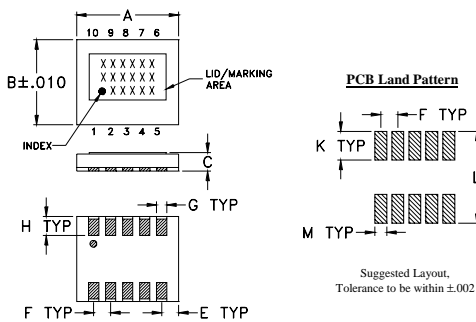
- satellite up and down converters
- line of sight links
- defense radar
- defense communications

**+RoHS Compliant**  
The +Suffix identifies RoHS Compliance. See our web site for RoHS Compliance methodologies and qualifications

Available Tape and Reel at no extra cost

Reel Size	Devices/Reel
7"	10, 20, 50, 100, 200, 500
13"	1000

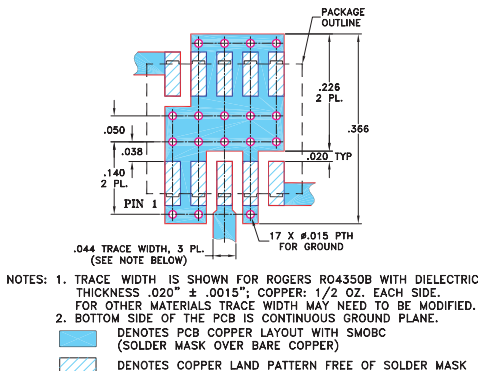
### Outline Drawing



### Outline Dimensions (inch/mm)

A	B	C	D	E	F	G	wt
.30	.250	.060	--	.050	.050	.030	grams
7.62	6.35	1.52	--	1.27	1.27	0.76	
H	J	K	L	M			
.056	--	.085	.270	.035			
1.42	--	2.16	6.86	0.89			0.29

### Demo Board MCL P/N: TB-144 Suggested PCB Layout (PL-045)



### Electrical Specifications at 25°C

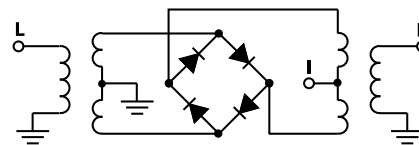
Parameter	Condition (MHz)	Min.	Typ.	Max.	Units
Frequency Range, LO/RF			<b>2800 - 8000</b>		MHz
Frequency Range, IF			DC - 1250		MHz
Conversion Loss*	2800 - 5000 5000 - 8000	— —	6.0 6.5	9.1 8.9	dB
LO to RF Isolation	2800 - 5000 5000 - 8000	28 25	42 34	—	dB
LO to IF Isolation	2800 - 5000 5000 - 8000	9 14	16 31	—	dB
IP3	2800 - 5000 5000 - 8000	— —	23 21	—	dBm
RF Input Power at 1 dB Compression	2800 - 8000		+14		dBm

\*Conversion Loss measured at 30 MHz IF.

### Typical Performance Data at 25°C and LO=+17dBm

Frequency (MHz)	Conversion Loss (dB)		Isolation L-R (dB)		VSWR RF Port (:1)		VSWR LO Port (:1)	
	RF	LO	LO +17dBm	LO +17dBm	LO +17dBm	LO +17dBm	LO +17dBm	LO +17dBm
2800.1	2830.1	7.06	57.44	10.35	4.13	2.52		
3100.1	3130.1	6.29	43.03	13.43	3.32	2.50		
3400.1	3430.1	5.71	43.76	14.86	2.11	2.24		
3700.1	3730.1	5.42	44.25	14.69	2.17	1.76		
4000.1	4030.1	6.49	41.65	12.39	3.31	1.66		
4400.1	4430.1	6.84	31.47	14.33	2.58	1.77		
4600.1	4630.1	8.21	36.26	18.13	3.41	1.90		
5000.1	5030.1	6.71	31.71	24.64	2.88	1.80		
5200.1	5230.1	6.09	32.59	27.40	2.59	2.06		
5400.1	5430.1	5.67	36.74	28.65	2.24	2.12		
5800.1	5830.1	7.95	39.06	30.29	3.88	2.05		
6000.1	6030.1	7.18	46.65	31.00	4.18	2.33		
6400.1	6430.1	6.29	40.59	33.09	3.34	2.79		
6600.1	6630.1	6.33	37.23	34.29	3.30	3.04		
7000.1	7030.1	5.71	33.47	33.57	2.59	2.27		
7200.1	7230.1	5.55	31.68	28.11	2.18	2.09		
7400.1	7430.1	5.47	32.63	24.17	2.07	1.94		
7600.1	7630.1	5.65	35.03	22.67	1.92	1.97		
7800.1	7830.1	5.91	30.31	19.57	1.80	2.27		
8000.1	8030.1	6.53	26.67	15.63	1.68	2.78		

### Electrical Schematic



**Mini-Circuits**  
ISO 9001 ISO 14001 AS 9100 CERTIFIED

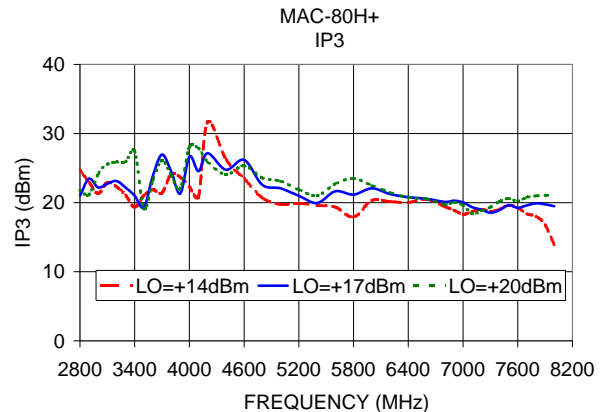
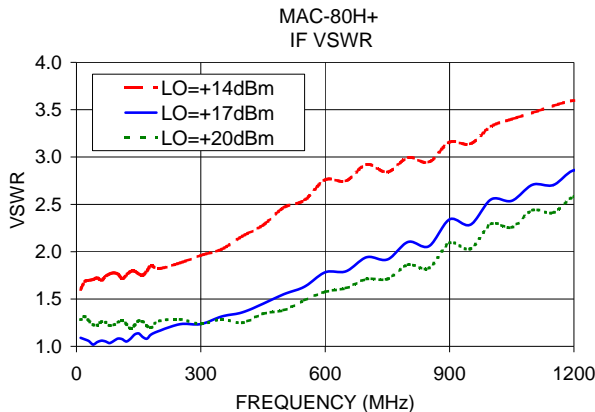
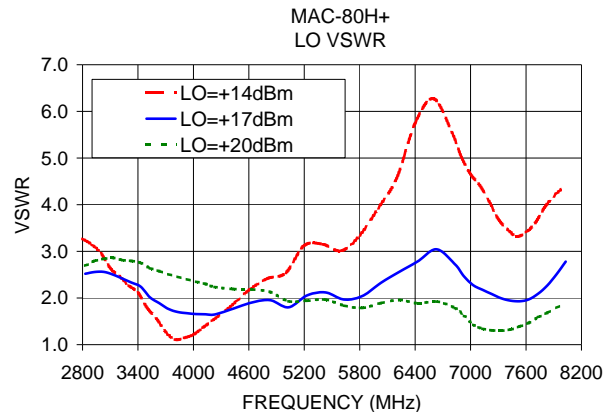
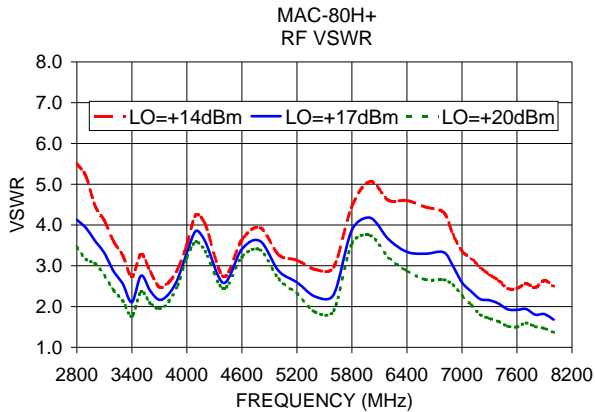
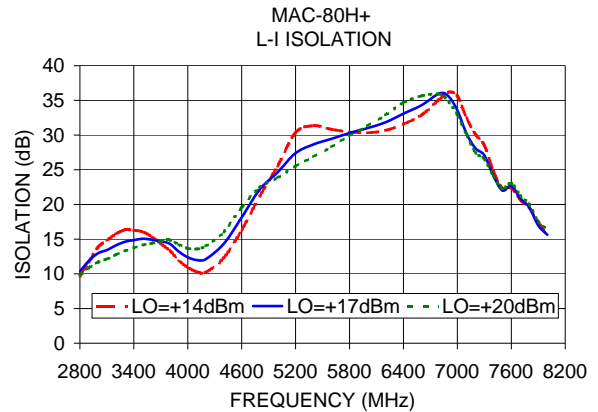
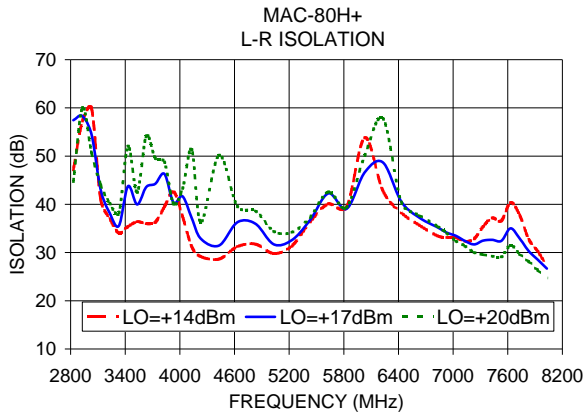
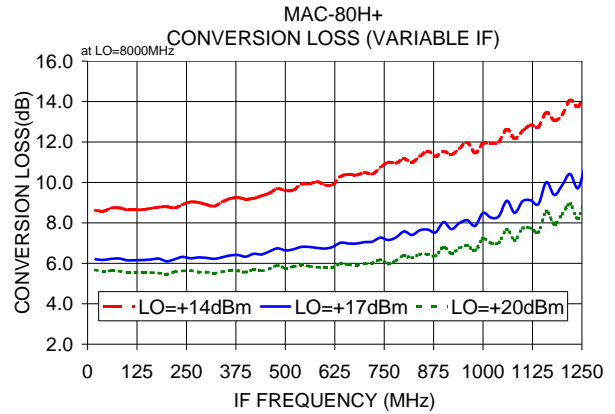
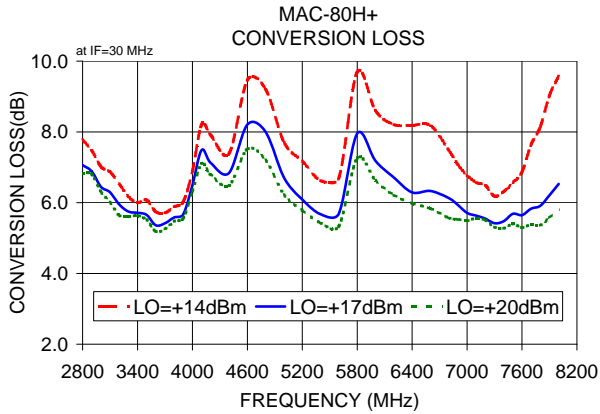
For detailed performance specs & shopping online see web site

P.O. Box 350166, Brooklyn, New York 11235-0003 (718) 934-4500 Fax (718) 332-4661 The Design Engineers Search Engine Provides ACTUAL Data Instantly at [minicircuits.com](http://minicircuits.com)

IF/RF MICROWAVE COMPONENTS

Notes: 1. Performance and quality attributes and conditions not expressly stated in this specification sheet are intended to be excluded and do not form a part of this specification sheet. 2. Electrical specifications and performance data contained herein are based on Mini-Circuits' applicable established test performance criteria and measurement instructions. 3. The parts covered by this specification sheet are subject to Mini-Circuits standard limited warranty and terms and conditions (collectively, "Standard Terms"); Purchasers of this part are entitled to the rights and benefits contained therein. For a full statement of the Standard Terms and the exclusive rights and remedies thereunder, please visit Mini-Circuits' website at [www.minicircuits.com/MCLStore/terms.jsp](http://www.minicircuits.com/MCLStore/terms.jsp).

REV. B  
M136739  
ED-14156/17  
MAC-80H+  
DJ/CP/AM  
121204  
Page 2 of 4



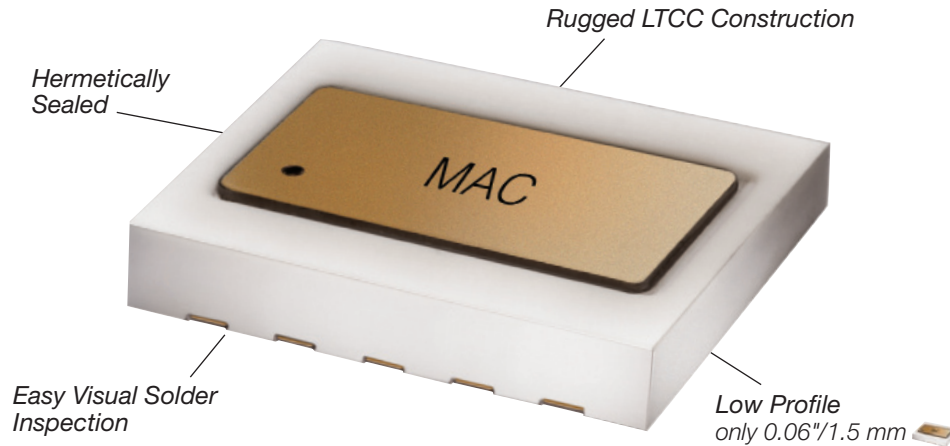
For detailed performance specs & shopping online see web site

P.O. Box 350166, Brooklyn, New York 11235-0003 (718) 934-4500 Fax (718) 332-4661 The Design Engineers Search Engine Provides ACTUAL Data Instantly at [minicircuits.com](http://minicircuits.com)

IF/RF MICROWAVE COMPONENTS

Notes: 1. Performance and quality attributes and conditions not expressly stated in this specification sheet are intended to be excluded and do not form a part of this specification sheet. 2. Electrical specifications and performance data contained herein are based on Mini-Circuit's applicable established test performance criteria and measurement instructions. 3. The parts covered by this specification sheet are subject to Mini-Circuits standard limited warranty and terms and conditions (collectively, "Standard Terms"); Purchasers of this part are entitled to the rights and benefits contained therein. For a full statement of the Standard Terms and the exclusive rights and remedies thereunder, please visit Mini-Circuits' website at [www.minicircuits.com/MCLStore/terms.jsp](http://www.minicircuits.com/MCLStore/terms.jsp).

# Designed and Built for Long-Term Reliability in **HOSTILE ENVIRONMENTS**



## Mini-Circuits MAC mixers meet or exceed the following qualifications:

<b>Gross Leak</b>	MIL-STD-202 Method 112, Condition D (100% of all MAC Mixers we ship)
<b>Fine Leak</b>	MIL-STD-202 Method 112, Condition C, Procedure IIIa
<b>Thermal Shock</b>	MIL-STD-202 Method 107 (-55/+100°C, 1000 cycles, 15 minutes) (-55/+150°C, 1000 cycles, 15 minutes)
<b>Vibration</b>	MIL-STD-202 Method 204, Condition D (10-2000Hz sine, 20g, 3 axis, 12 c.y.ea.)
<b>Acceleration</b>	MIL- STD-883 Method 2001, Condition E
<b>Mechanical Shock</b>	MIL-STD-202 Method 213, Condition A
<b>HTOL</b>	MIL-STD-202 Method 108, Condition D (1000 hours, 125°C, at rated LO level)
<b>Multiple Reflow</b>	JESD22-B102
<b>Bend Test</b>	JESD22-B113
<b>Adhesion Strength</b>	Push test >10lb



All Photos courtesy of U.S. Military and NASA

**Mini-Circuits**<sup>®</sup>  
ISO 9001 ISO 14001 AS 9100 CERTIFIED

P.O. Box 350166, Brooklyn, New York 11235-0003 (718) 934-4500 Fax (718) 332-4661 The Design Engineers Search Engine  Provides ACTUAL Data Instantly at [minicircuits.com](http://minicircuits.com)

IF/RF MICROWAVE COMPONENTS

For detailed performance specs  
& shopping online see web site

**Notes:** 1. Performance and quality attributes and conditions not expressly stated in this specification sheet are intended to be excluded and do not form a part of this specification sheet. 2. Electrical specifications and performance data contained herein are based on Mini-Circuit's applicable established test performance criteria and measurement instructions. 3. The parts covered by this specification sheet are subject to Mini-Circuits standard limited warranty and terms and conditions (collectively, "Standard Terms"); Purchasers of this part are entitled to the rights and benefits contained therein. For a full statement of the Standard Terms and the exclusive rights and remedies thereunder, please visit Mini-Circuits' website at [www.minicircuits.com/MCLStore/terms.jsp](http://www.minicircuits.com/MCLStore/terms.jsp).