

Ceramic Active Mixer

MACA-63H+

Level 0 (LO Power 0 dBm) 2000 to 6000 MHz

Maximum Ratings

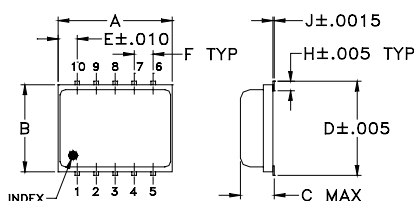
Operating Temperature	-40°C to 85°C
Storage Temperature	-55°C to 100°C
RF Power	100mW
IF Current	40mA
LO Power	10mW

Permanent damage may occur if any of these limits are exceeded.

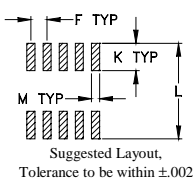
Pin Connections

LO	10
RF	5
IF	3
DC	7
GROUND	1,2,4,6,8,9

Outline Drawing



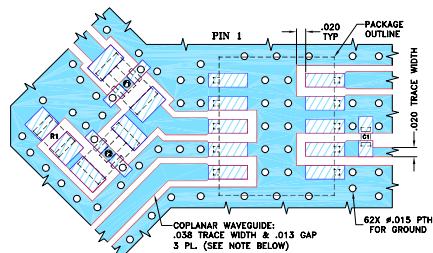
PCB Land Pattern



Outline Dimensions (inch/mm)

A	B	C	D	E	F	G
.30	.250	.105	.266	.050	.050	.012
7.62	6.35	2.67	6.76	1.27	1.27	0.30
H	J	K	L	M	wt	
.029	.004	.085	.296	.030	grams	
0.74	0.10	2.16	7.52	0.76	0.3	

Demo Board MCL P/N: TB-404 Suggested PCB Layout (PL-283)



CAPACITOR C1: 1000 pF, 0402 SIZE
 RESISTOR R1: 49.9 Ohm, 0805 SIZE
 FILTER F1: LFCN-1400+, FY1206 CASE STYLE
 FILTER F2: HFCN-1810+, FY1206 CASE STYLE

NOTE: 1. COPLANAR WAVEGUIDE PARAMETERS ARE SHOWN FOR ROGERS RO4350B WITH DIELECTRIC THICKNESS 0.020" ± 0.0015". COPPER: 1/2 OZ. EACH SIDE. FOR OTHER MATERIALS TRACE WIDTH MAY NEED TO BE MODIFIED.
 2. BOTTOM SIDE OF THE PCB IS CONTINUOUS GROUND PLANE.

■ DENOTES PCB COPPER LAYOUT WITH SMOBC (SOLDER MASK OVER BARE COPPER)
 ■ DENOTES COPPER LAND PATTERN FREE OF SOLDER MASK

Features

- low conversion loss, 6.9 dB typ.
- wide bandwidth, 2000 to 6000 MHz
- LTCC double balanced mixer with LO amplifier
- aqueous washable
- low profile
- low cost
- protected by US patent 7,027,795

Applications

- PCN
- defense & weather radar
- WCDMA
- defense communications

Electrical Specifications

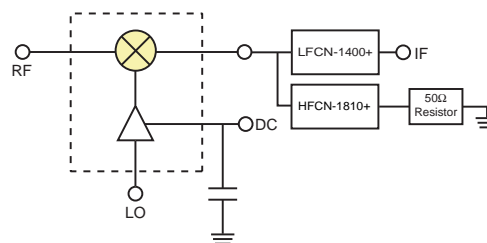
FREQUENCY (MHz)	CONVERSION LOSS* (dB)	LO-RF ISOLATION (dB)	LO-IF ISOLATION (dB)	DC POWER		IP3 at center band (dBm)
				Volt	Current (mA) Max.	
2000-3500	6.9	16	35	5	110	20
3500-6000	6.9	8	35	5	110	19

1 dB Compr. +10 dBm typ.
 * Conversion loss at 30 MHz IF.

Typical Performance Data

Frequency (MHz)	Conversion Loss (dB)		Isolation (dB)		VSWR RF Port (:1)	VSWR LO Port (:1)
	LO 0dBm	LO 0dBm	L-R (dB)	L-I (dB)		
2005.10	6.41	22.93	35.96	2.40	5.17	
2205.10	6.50	20.61	45.55	2.42	5.83	
2405.10	5.80	21.34	33.28	2.11	3.80	
2605.10	5.89	18.60	33.35	1.87	3.21	
2805.10	6.96	17.66	35.62	3.43	3.09	
3005.10	6.65	14.13	36.97	2.95	3.10	
3205.10	7.25	12.80	36.60	3.12	3.17	
3405.10	7.25	15.03	34.47	3.15	2.97	
3605.10	7.95	14.75	33.49	3.73	2.39	
3805.10	7.78	18.55	31.52	3.26	1.82	
4005.10	7.16	18.19	32.59	2.66	1.44	
4405.10	6.15	8.68	37.37	1.40	1.48	
4605.10	6.67	8.24	37.63	1.63	1.56	
4805.10	7.06	8.76	37.81	1.58	1.62	
5005.10	6.81	6.77	36.56	1.17	1.67	
5205.10	6.40	6.01	35.48	1.61	1.60	
5405.10	6.46	6.05	34.71	1.65	1.47	
5605.10	6.95	7.12	33.12	2.21	1.36	
5805.10	7.27	7.91	33.45	2.57	1.35	
6005.10	7.48	8.62	33.08	2.82	1.43	

Electrical Schematic



LFCN-1400+ & HFCN-1810+ are added to improve isolations.



CASE STYLE: DZ1034
 PRICE: \$12.95 ea. QTY (1-9)

+ RoHS compliant in accordance with EU Directive (2002/95/EC)

The +Suffix has been added in order to identify RoHS Compliance. See our web site for RoHS Compliance methodologies and qualifications.

Mini-Circuits
 ISO 9001 ISO 14001 AS 9100 CERTIFIED

For detailed performance specs & shopping online see web site

P.O. Box 350166, Brooklyn, New York 11235-0003 (718) 934-4500 Fax (718) 332-4661 The Design Engineers Search Engine Provides ACTUAL Data Instantly at minicircuits.com

IF/RF MICROWAVE COMPONENTS

Notes: 1. Performance and quality attributes and conditions not expressly stated in this specification sheet are intended to be excluded and do not form a part of this specification sheet. 2. Electrical specifications and performance data contained herein are based on Mini-Circuit's applicable established test performance criteria and measurement instructions. 3. The parts covered by this specification sheet are subject to Mini-Circuits standard limited warranty and terms and conditions (collectively, "Standard Terms"); Purchasers of this part are entitled to the rights and benefits contained therein. For a full statement of the Standard Terms and the exclusive rights and remedies thereunder, please visit Mini-Circuits' website at www.minicircuits.com/MCLStore/terms.jsp.

REV. A
 M115874
 ED-10457/10
 MACA-63H+
 DJ/CP/AM/QL
 080214
 Page 1 of 2

