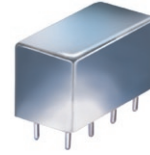


Plug-In Limiter

50Ω Broadband, 0.1 to 150 MHz

PLS-1+



CASE STYLE: A01
PRICE: \$27.70 ea. QTY. (1-9)

+ RoHS compliant in accordance with EU Directive (2002/95/EC)

The +Suffix has been added in order to identify RoHS Compliance. See our web site for RoHS Compliance methodologies and qualifications.

Maximum Ratings

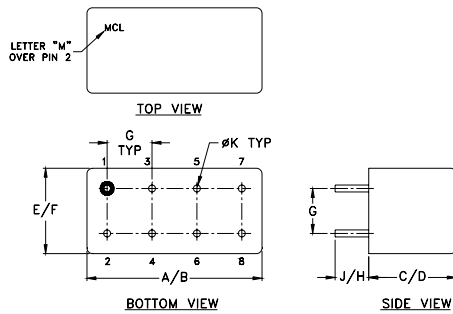
Operating Temperature	-55°C to 100°C
Storage Temperature	-55°C to 100°C
RF Input Power	100mW
Control Current	10mA
Permanent damage may occur if any of these limits are exceeded.	

Pin Connections

INPUT	1
OUTPUT	8
CONTROL	3,4^
GROUND	2,5,6,7
CASE GROUND	2

^ pins must be connected together externally

Outline Drawing



Outline Dimensions (inch/mm)

A	B	C	D	E	F	
.770	.800	.385	.400	.370	.400	
19.56	20.32	9.78	10.16	9.40	10.16	
G	H	J	K			wt
.200	.20	.14	.031			grams
5.08	5.08	3.56	0.79			5.2

Features

- hermetic shielded case
- very small phase variation

Applications

- military, hi-rel applications
- stabilizing generator outputs
- reducing amplitude variations
- providing constant amplitude signals in phase sensitive systems

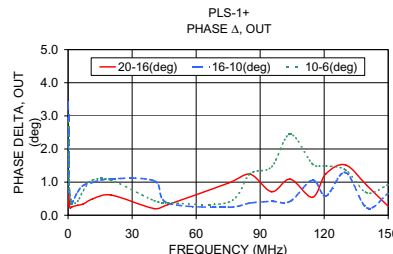
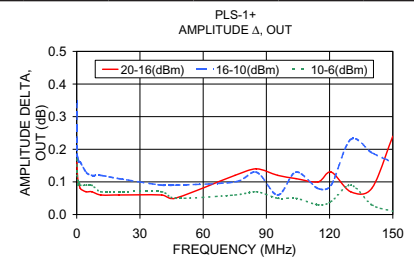
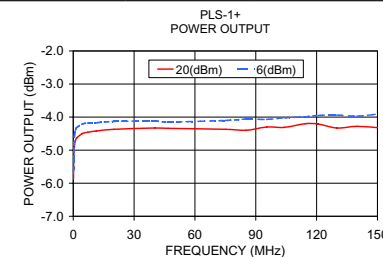
Electrical Specifications

Parameter	Condition	Min.	Typ.	Max.	Units
Frequency Range		0.1		150	MHz
Input Power		6.0		20	dBm
Output Power*			-4.0		dBm
Control Current			3.0		mA
Limiting Δ Output/1dB Δ Input	Input Power Range (dBm)				
	6 to 10	Amp	0.10	0.8	phase, deg/dB
	10 to 16	0.15	0.8		
	16 to 20	0.15	0.7		

* Typical output level at typical control current, level maybe changed by varying current.

Typical Performance Data

Frequency (MHz)	Power Output		Delta (dB)	Amplitude Delta, out dBm Input			Phase Delta, Out dBm Input		
	(20 dBm IN) (dBm)	(6 dBm IN) (dBm)		20-16 (dB)	16-10 (dB)	10-6 (dB)	20-16 (deg.)	16-10 (deg.)	10-6 (deg.)
0.10	-5.87	-5.68	0.19	0.16	0.35	0.17	0.28	3.41	2.84
0.26	-5.21	-4.86	0.36	0.13	0.18	0.12	0.69	1.29	1.52
0.66	-4.83	-4.52	0.31	0.10	0.17	0.09	0.30	0.70	0.75
1.06	-4.72	-4.39	0.33	0.10	0.16	0.10	0.21	0.49	0.48
1.71	-4.63	-4.32	0.31	0.08	0.16	0.09	0.25	0.36	0.35
4.42	-4.50	-4.21	0.29	0.07	0.13	0.09	0.30	0.70	0.42
7.11	-4.46	-4.18	0.28	0.07	0.12	0.09	0.34	0.90	0.74
11.41	-4.42	-4.17	0.25	0.06	0.12	0.07	0.49	0.99	1.06
20.08	-4.37	-4.13	0.24	0.06	0.11	0.07	0.61	1.10	1.06
40.32	-4.33	-4.12	0.21	0.06	0.09	0.07	0.20	1.04	0.44
46.73	-4.34	-4.15	0.19	0.05	0.09	0.05	0.32	0.37	0.38
75.09	-4.37	-4.10	0.28	0.12	0.10	0.06	0.97	0.24	0.39
85.23	-4.40	-4.06	0.34	0.14	0.13	0.07	1.24	0.37	1.25
95.37	-4.30	-4.07	0.23	0.12	0.06	0.05	0.71	0.42	1.46
104.06	-4.31	-4.02	0.29	0.11	0.13	0.05	1.09	0.42	2.45
114.50	-4.20	-3.99	0.22	0.10	0.08	0.03	0.54	1.06	1.55
120.76	-4.21	-3.95	0.26	0.13	0.09	0.04	1.25	0.58	1.49
129.95	-4.33	-3.94	0.39	0.07	0.23	0.09	1.52	1.29	1.37
139.98	-4.28	-3.97	0.32	0.08	0.19	0.03	0.90	0.22	0.68
150.00	-4.32	-3.91	0.41	0.24	0.16	0.01	0.27	0.66	0.92



Mini-Circuits®
ISO 9001 ISO 14001 AS 9100 CERTIFIED
IF/RF MICROWAVE COMPONENTS

For detailed performance specs & shopping online see web site

P.O. Box 350166, Brooklyn, New York 11235-0003 (718) 934-4500 Fax (718) 332-4661 The Design Engineers Search Engine Provides ACTUAL Data Instantly at minicircuits.com

Notes: 1. Performance and quality attributes and conditions not expressly stated in this specification sheet are intended to be excluded and do not form a part of this specification sheet. 2. Electrical specifications and performance data contained herein are based on Mini-Circuit's applicable established test performance criteria and measurement instructions. 3. The parts covered by this specification sheet are subject to Mini-Circuit's standard limited warranty and terms and conditions (collectively, "Standard Terms"); Purchasers of this part are entitled to the rights and benefits contained therein. For a full statement of the Standard Terms and the exclusive rights and remedies thereunder, please visit Mini-Circuit's website at www.minicircuits.com/MCLStore/terms.jsp.

REV. C
M126372
PLS-1+
DJ/V/CP
100215