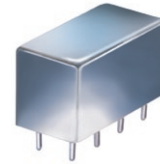


# Plug-In Limiter

50Ω Broadband, 100 to 900 MHz

PLS-2+  
PLS-2



CASE STYLE: A01  
PRICE: \$27.70 ea. QTY. (1-9)

+ RoHS compliant in accordance with EU Directive (2002/95/EC)

The +Suffix identifies RoHS Compliance. See our web site for RoHS Compliance methodologies and qualifications.

## Maximum Ratings

Operating Temperature	-55°C to 100°C
Storage Temperature	-55°C to 100°C
RF Input Power	100mW
Control Current	10mA

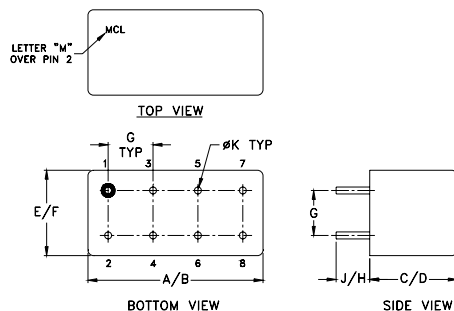
Permanent damage may occur if any of these limits are exceeded.

## Pin Connections

INPUT	1
OUTPUT	8
CONTROL	3,4^
GROUND	2,5,6,7
CASE GROUND	2,5,6,7

^ pins must be connected together externally

## Outline Drawing



## Outline Dimensions (inch/mm)

A	B	C	D	E	F
.770	.800	.385	.400	.370	.400
19.56	20.32	9.78	10.16	9.40	10.16
G	H	J	K	wt	
.200	.20	.14	.031	grams	
5.08	5.08	3.56	0.79	5.2	

## Features

- wideband, 100 to 900 MHz
- very small phase variation
- hermetic shielded case

## Applications

- military, hi-rel applications
- stabilizing generator outputs
- reducing amplitude variations
- providing constant amplitude signals in phase sensitive systems

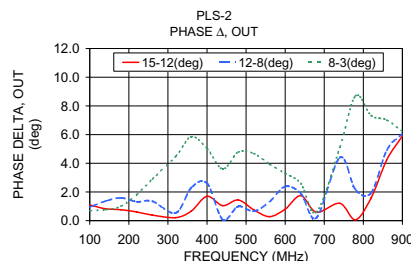
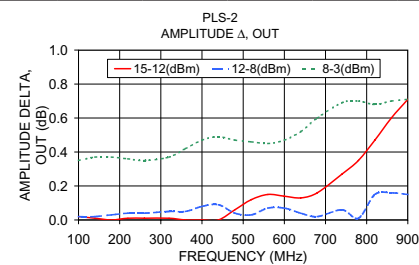
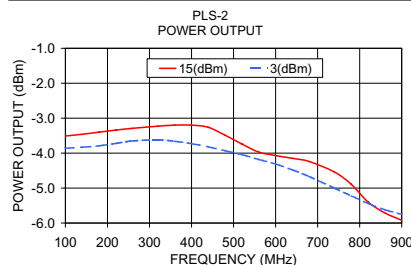
## Electrical Specifications

Parameter	Condition	Min.	Typ.	Max.	Units
Frequency Range		100		900	MHz
Input Power		3.0		15	dBm
Output Power*			-5.0		dBm
Control Current			5.0		mA
Limiting Δ Output/1dB Δ Input	Input Power Range (dBm)				
	3 to 8		2.0		phase, deg/dB
	8 to 12		2.0		
12 to 15		2.0			

\* Typical output level at typical control current, level may be changed by varying current.

## Typical Performance Data

Frequency (MHz)	Power Output		Delta (dB)	Amplitude Delta, out dBm Input			Phase Delta, Out dBm Input		
	(15 dBm IN) (dBm)	(3 dBm IN) (dBm)		15-12 (dB)	12-8 (dB)	8-3 (dB)	15-12 (deg.)	12-8 (deg.)	8-3 (deg.)
100.00	-3.51	-3.86	0.35	0.02	0.02	0.35	1.10	0.94	0.70
140.00	-3.46	-3.83	0.37	0.01	0.02	0.37	0.83	1.36	0.76
180.00	-3.40	-3.79	0.38	0.00	0.03	0.37	0.76	1.59	1.01
220.00	-3.34	-3.72	0.38	0.01	0.04	0.36	0.61	1.32	1.81
260.00	-3.29	-3.65	0.36	0.01	0.04	0.35	0.39	1.36	2.90
320.00	-3.23	-3.62	0.39	0.01	0.05	0.37	0.21	0.54	4.48
360.00	-3.20	-3.66	0.46	0.00	0.05	0.42	0.67	2.30	5.85
400.00	-3.20	-3.73	0.53	0.00	0.08	0.47	1.70	2.61	5.03
440.00	-3.26	-3.82	0.56	0.00	0.09	0.49	1.05	0.08	3.60
480.00	-3.49	-3.93	0.44	0.06	0.04	0.47	1.44	0.99	4.78
520.00	-3.74	-4.04	0.30	0.12	0.03	0.46	0.75	0.66	4.68
560.00	-3.97	-4.18	0.21	0.15	0.07	0.45	0.28	1.32	3.94
600.00	-4.07	-4.31	0.25	0.14	0.07	0.47	0.80	2.38	3.30
640.00	-4.15	-4.48	0.33	0.13	0.04	0.52	1.75	1.89	2.59
680.00	-4.24	-4.67	0.43	0.16	0.02	0.60	0.59	0.20	0.60
740.00	-4.54	-5.00	0.46	0.27	0.06	0.69	1.21	4.40	5.11
780.00	-4.89	-5.22	0.33	0.35	0.01	0.70	0.06	2.16	8.70
820.00	-5.40	-5.44	0.04	0.47	0.15	0.68	1.59	1.94	7.33
860.00	-5.71	-5.62	0.09	0.60	0.16	0.70	4.24	4.91	7.02
900.00	-5.92	-5.75	0.17	0.71	0.15	0.71	5.90	6.07	6.23



**Mini-Circuits®**  
ISO 9001 ISO 14001 AS 9100 CERTIFIED  
IF/RF MICROWAVE COMPONENTS

For detailed performance specs & shopping online see web site

P.O. Box 350166, Brooklyn, New York 11235-0003 (718) 934-4500 Fax (718) 332-4661 The Design Engineers Search Engine Provides ACTUAL Data Instantly at [minicircuits.com](http://minicircuits.com)

Notes: 1. Performance and quality attributes and conditions not expressly stated in this specification sheet are intended to be excluded and do not form a part of this specification sheet. 2. Electrical specifications and performance data contained herein are based on Mini-Circuit's applicable established test performance criteria and measurement instructions. 3. The parts covered by this specification sheet are subject to Mini-Circuits standard limited warranty and terms and conditions (collectively, "Standard Terms"); Purchasers of this part are entitled to the rights and benefits contained therein. For a full statement of the Standard Terms and the exclusive rights and remedies thereunder, please visit Mini-Circuits' website at [www.minicircuits.com/MCLStore/terms.jsp](http://www.minicircuits.com/MCLStore/terms.jsp).

REV. B  
M126372  
PLS-2  
DJ/VV/CP/AM  
100215