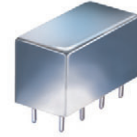


Plug-In

Power Splitter/Combiner

PQW-2-90+

2 Way-90° 50Ω 30 to 90 MHz



Maximum Ratings

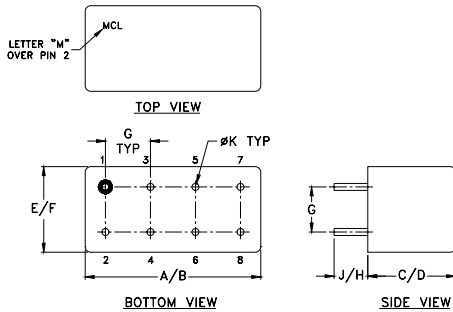
Operating Temperature	-55°C to 100°C
Storage Temperature	-55°C to 100°C
Power Input (as a splitter)	1W max.

Permanent damage may occur if any of these limits are exceeded.

Pin Connections

SUM PORT	1
PORT 1 (0°)	2
PORT 2 (+90°)	6
GROUND	3,4,7,8
CASE GROUND	3,4,7,8
50 OHM TERM EXTERNAL	5

Outline Drawing



Outline Dimensions (inch/mm)

A	B	C	D	E	F	
.770	.800	.385	.400	.370	.400	
19.56	20.32	9.78	10.16	9.40	10.16	
G	H	J	K			wt
.200	.20	.14	.031			grams
5.08	5.08	3.56	0.79			5.2

Features

- low insertion loss, 0.3 dB typ.
- good isolation, 27 dB typ.
- excellent VSWR, 1.15:1 typ.
- rugged shielded case

Applications

- modulators
- balanced amplifiers
- image shielded case

CASE STYLE: A01
PRICE: \$32.20 ea. QTY. (1-9)

+ RoHS compliant in accordance with EU Directive (2002/95/EC)

The +Suffix has been added in order to identify RoHS Compliance. See our web site for RoHS Compliance methodologies and qualifications.

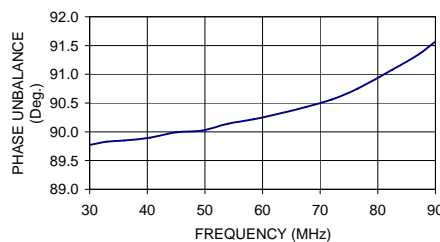
Electrical Specifications

FREQ. RANGE (MHz)	ISOLATION (dB)		INSERTION LOSS (dB) Avg. of Coupled Outputs less 3 dB		PHASE UNBALANCE (Degrees)	AMPLITUDE UNBALANCE (dB)
	Typ.	Min.	Typ.	Max.	Max.	Max.
f_L - f_U						
30-90	27	20	0.3	0.6	3	1.0

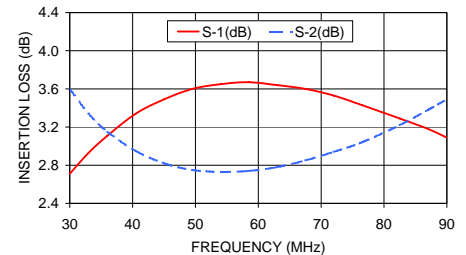
Typical Performance Data

Frequency (MHz)	Insertion Loss (dB)		Amplitude Unbalance (dB)	Isolation (dB)	Phase Unbalance (deg.)	VSWR S	VSWR 1	VSWR 2
	S-1	S-2						
30.00	2.71	3.60	0.89	32.92	89.77	1.02	1.03	1.01
33.00	2.93	3.34	0.41	32.65	89.83	1.02	1.03	1.02
36.00	3.11	3.15	0.04	32.46	89.85	1.02	1.04	1.02
40.50	3.34	2.95	0.39	32.18	89.90	1.02	1.04	1.01
45.00	3.49	2.82	0.67	31.83	89.99	1.03	1.05	1.01
49.50	3.60	2.75	0.84	31.41	90.02	1.03	1.05	1.01
54.00	3.65	2.73	0.92	30.85	90.14	1.03	1.05	1.00
58.50	3.67	2.74	0.93	30.15	90.22	1.04	1.06	1.01
63.00	3.64	2.78	0.86	29.25	90.32	1.05	1.06	1.02
67.50	3.60	2.85	0.75	28.24	90.43	1.06	1.07	1.03
72.00	3.53	2.94	0.59	27.13	90.56	1.08	1.07	1.05
76.50	3.43	3.04	0.39	25.96	90.75	1.10	1.09	1.06
82.50	3.29	3.22	0.07	24.40	91.08	1.13	1.11	1.09
87.00	3.18	3.38	0.20	23.25	91.34	1.15	1.13	1.12
90.00	3.09	3.49	0.41	22.50	91.57	1.17	1.15	1.13

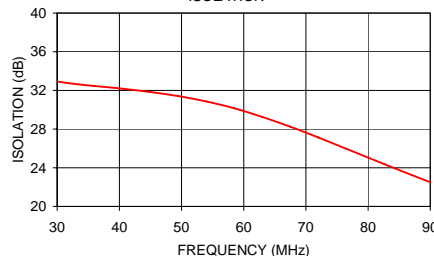
PQW-2-90+ PHASE UNBALANCE



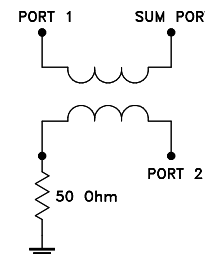
PQW-2-90+ INSERTION LOSS



PQW-2-90+ ISOLATION



electrical schematic



For detailed performance specs & shopping online see web site



P.O. Box 350166, Brooklyn, New York 11235-0003 (718) 934-4500 Fax (718) 332-4661 The Design Engineers Search Engine Provides ACTUAL Data Instantly at minicircuits.com

Notes: 1. Performance and quality attributes and conditions not expressly stated in this specification sheet are intended to be excluded and do not form a part of this specification sheet. 2. Electrical specifications and performance data contained herein are based on Mini-Circuit's applicable established test performance criteria and measurement instructions. 3. The parts covered by this specification sheet are subject to Mini-Circuits standard limited warranty and terms and conditions (collectively, "Standard Terms"); Purchasers of this part are entitled to the rights and benefits contained therein. For a full statement of the Standard Terms and the exclusive rights and remedies thereunder, please visit Mini-Circuits' website at www.minicircuits.com/MCLStore/terms.jsp.

REV. B
M121747
PQW-2-90+
HY/TD/CP/AM
090824