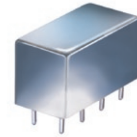


Plug-In

Power Splitter/Combiner

PSC-2-5+

2 Way-0° 50Ω 10 to 1400 MHz



Maximum Ratings

Operating Temperature	-55°C to 100°C
Storage Temperature	-55°C to 100°C
Power Input (as a splitter)	1W max.
Internal Dissipation	0.125W max.

Permanent damage may occur if any of these limits are exceeded.

Pin Connections

SUM PORT	1
PORT 1	5
PORT 2	6
GROUND	2,3,4,7,8
CASE GROUND	2,3,4,7,8

Features

- wideband, 10 to 1400 MHz
- low insertion loss, 0.6 dB typ.
- rugged welded constructions

Applications

- cellular
- VHF/UHF
- GPS
- defense & federal communications

CASE STYLE: A01
PRICE: \$34.20 ea. QTY. (1-9)

+ RoHS compliant in accordance with EU Directive (2002/95/EC)

The +Suffix has been added in order to identify RoHS Compliance. See our web site for RoHS Compliance methodologies and qualifications.

Electrical Specifications

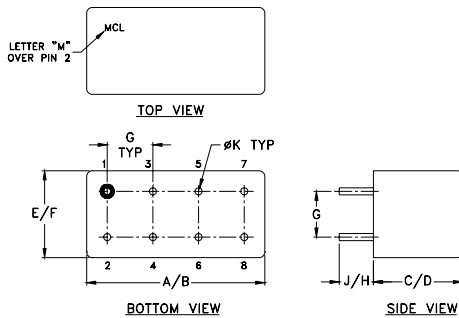
FREQ. RANGE (MHz)	ISOLATION (dB)						INSERTION LOSS (dB) ABOVE 3.0 dB						PHASE UNBALANCE (Degrees)			AMPLITUDE UNBALANCE (dB)		
	L		M		U		L		M		U		L	M	U	L	M	U
	Typ.	Min.	Typ.	Min.	Typ.	Min.	Typ.	Max.	Typ.	Max.	Typ.	Max.	Max.	Max.	Max.	Max.	Max.	Max.
10-1400	28	18	22	17	24	17	0.3	0.6	0.6	1.0	0.9	1.6	2.0	3.0	4.0	0.15	0.2	0.4

L = low range [f_L to $10 f_L$] M = mid range [$10 f_L$ to $f_U/2$] U = upper range [$f_U/2$ to f_U]

Typical Performance Data

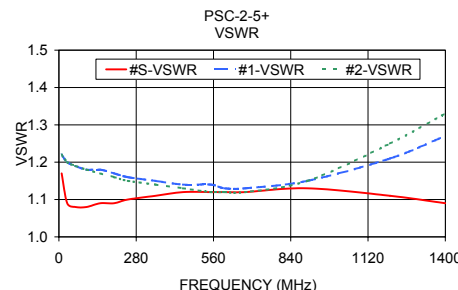
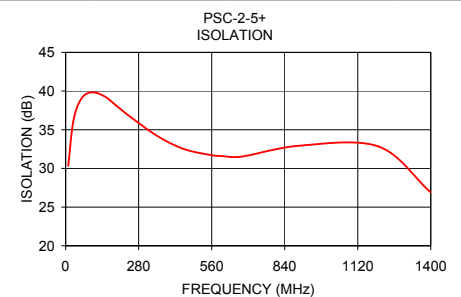
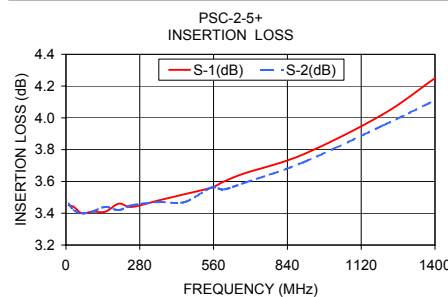
Frequency (MHz)	Insertion Loss (dB)		Amplitude Unbalance (dB)	Isolation (dB)	Phase Unbalance (deg.)	VSWR S	VSWR 1	VSWR 2
	S-1	S-2						
10.00	3.45	3.46	0.01	30.32	0.11	1.17	1.22	1.22
30.00	3.44	3.42	0.03	36.20	0.16	1.09	1.20	1.20
60.00	3.40	3.40	0.01	38.99	0.21	1.08	1.19	1.19
100.00	3.41	3.41	0.01	39.84	0.03	1.08	1.18	1.18
150.00	3.41	3.44	0.03	39.30	0.23	1.09	1.18	1.17
200.00	3.46	3.42	0.04	37.96	0.25	1.09	1.17	1.16
250.00	3.44	3.45	0.01	36.62	0.03	1.10	1.16	1.15
350.00	3.48	3.47	0.01	34.23	0.21	1.11	1.15	1.14
450.00	3.52	3.47	0.05	32.55	0.67	1.12	1.14	1.13
550.00	3.56	3.56	0.00	31.77	0.60	1.12	1.14	1.12
600.00	3.60	3.55	0.05	31.60	0.58	1.12	1.13	1.12
675.00	3.65	3.59	0.06	31.53	0.52	1.12	1.13	1.12
900.00	3.77	3.72	0.06	32.95	0.83	1.13	1.15	1.15
1200.00	4.02	3.95	0.07	32.83	0.56	1.11	1.21	1.25
1400.00	4.25	4.11	0.14	26.89	0.75	1.09	1.27	1.33

Outline Drawing



Outline Dimensions (inch/mm)

A	B	C	D	E	F	
.770	.800	.385	.400	.370	.400	
19.56	20.32	9.78	10.16	9.40	10.16	
G	H	J	K			wt
.200	.20	.14	.031			grams
5.08	5.08	3.56	0.79			5.2



electrical schematic



Mini-Circuits
ISO 9001 ISO 14001 AS 9100 CERTIFIED

minicircuits.com

P.O. Box 350166, Brooklyn, New York 11235-0003 (718) 934-4500 Fax (718) 332-4661 For detailed performance specs & shopping online see Mini-Circuits web site



The Design Engineers Search Engine Provides ACTUAL Data Instantly From MINI-CIRCUITS At: www.minicircuits.com

REV. B
M121747
PSC-2-5+
HY/TD/CP
090420

IF/RF MICROWAVE COMPONENTS