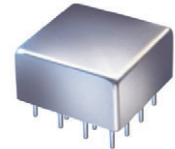


Plug-In

Power Splitter/Combiner

PSC-5-1+
PSC-5-1

5 Way-0° 50Ω 1 to 300 MHz



CASE STYLE: C07
PRICE: \$68.95 ea. QTY. (1-9)

+ RoHS compliant in accordance with EU Directive (2002/95/EC)

The +Suffix identifies RoHS Compliance. See our web site for RoHS Compliance methodologies and qualifications.

Maximum Ratings

| | |
|---|----------------|
| Operating Temperature | -55°C to 100°C |
| Storage Temperature | -55°C to 100°C |
| Power Input (as a splitter) | 1W max. |
| Internal Dissipation | 0.5W max. |
| Permanent damage may occur if any of these limits are exceeded. | |

Pin Connections

| | |
|-------------|----------------|
| SUM PORT | 1 |
| PORT 1 | 4 |
| PORT 2 | 8 |
| PORT 3 | 12 |
| PORT 4 | 16 |
| PORT 5 | 15 |
| GROUND | 2,5,7,11,13,14 |
| CASE GROUND | 2,5,7,11,13,14 |
| NOT USED | 3,6,9,10 |

Features

- low insertion loss, 0.6 dB typ.
- good isolation, 23 typ.
- rugged welded case

Applications

- UHF
- signal processing
- instrumentation

Electrical Specifications

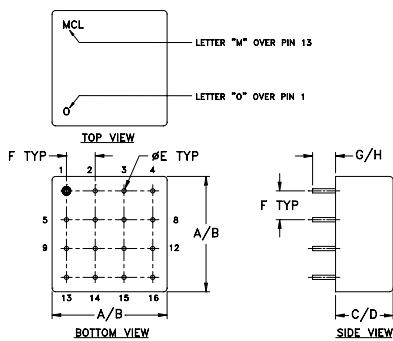
| FREQ. RANGE (MHz) | ISOLATION (dB) | | | | | | INSERTION LOSS (dB) ABOVE 7.0 dB | | | | | | PHASE UNBALANCE (Degrees) | | | AMPLITUDE UNBALANCE (dB) | | |
|--------------------------------|----------------|------|------|------|------|------|----------------------------------|------|------|------|------|------|---------------------------|------|------|--------------------------|------|------|
| | L | | M | | U | | L | | M | | U | | L | M | U | L | M | U |
| | Typ. | Min. | Typ. | Min. | Typ. | Min. | Typ. | Max. | Typ. | Max. | Typ. | Max. | Max. | Max. | Max. | Max. | Max. | Max. |
| f _L -f _U | | | | | | | | | | | | | | | | | | |
| 1-300 | 25 | 20 | 23 | 18 | 20 | 17 | 0.2 | 0.5 | 0.6 | 1.0 | 1.5 | 2.0 | 2 | 4 | 8 | 0.2 | 0.3 | 0.6 |

L = low range [f_L to 10 f_L] M = mid range [10 f_L to f_U/2] U = upper range [f_U/2 to f_U]

Typical Performance Data

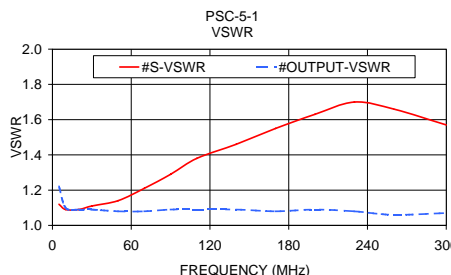
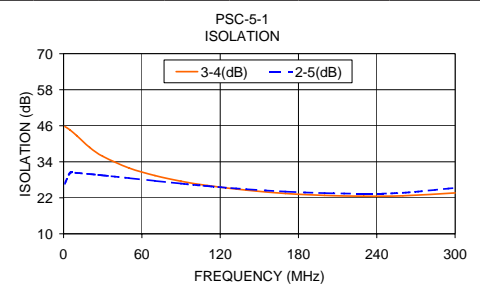
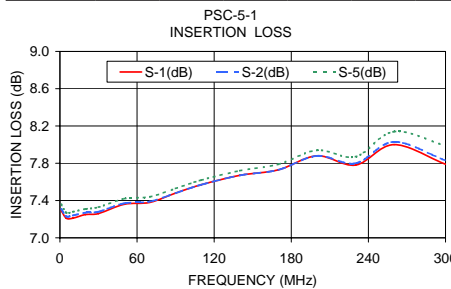
| Freq. (MHz) | Insertion Loss (dB) | | | | | Amp. Unbal. (dB) | Isolation (dB) | | | | Phase Unbal. (deg.) | VSWR S | VSWR OUTPUTS |
|-------------|---------------------|------|------|------|------|------------------|----------------|-------|-------|-------|---------------------|--------|--------------|
| | S-1 | S-2 | S-3 | S-4 | S-5 | | 1-2 | 2-3 | 3-4 | 2-5 | | | |
| 1.00 | 7.29 | 7.31 | 7.40 | 7.39 | 7.36 | 0.11 | 52.12 | 42.15 | 45.77 | 26.71 | 0.16 | 1.12 | 1.22 |
| 5.00 | 7.21 | 7.23 | 7.32 | 7.30 | 7.27 | 0.11 | 45.47 | 49.28 | 44.56 | 30.29 | 0.06 | 1.09 | 1.10 |
| 10.00 | 7.21 | 7.24 | 7.32 | 7.31 | 7.28 | 0.11 | 43.00 | 44.84 | 42.73 | 30.28 | 0.12 | 1.09 | 1.09 |
| 20.00 | 7.25 | 7.27 | 7.35 | 7.34 | 7.31 | 0.10 | 39.16 | 40.15 | 38.78 | 29.90 | 0.34 | 1.11 | 1.09 |
| 30.00 | 7.26 | 7.28 | 7.36 | 7.35 | 7.33 | 0.10 | 36.36 | 37.20 | 35.83 | 29.48 | 0.58 | 1.14 | 1.08 |
| 50.00 | 7.36 | 7.37 | 7.45 | 7.44 | 7.42 | 0.09 | 32.53 | 33.29 | 31.94 | 28.57 | 0.96 | 1.21 | 1.08 |
| 70.00 | 7.38 | 7.39 | 7.45 | 7.44 | 7.44 | 0.07 | 29.99 | 30.72 | 29.40 | 27.64 | 1.32 | 1.29 | 1.09 |
| 90.00 | 7.48 | 7.48 | 7.53 | 7.52 | 7.53 | 0.05 | 28.13 | 28.87 | 27.51 | 26.73 | 1.67 | 1.38 | 1.09 |
| 110.00 | 7.57 | 7.57 | 7.60 | 7.59 | 7.62 | 0.05 | 26.73 | 27.44 | 26.11 | 25.91 | 1.97 | 1.46 | 1.09 |
| 140.00 | 7.67 | 7.67 | 7.68 | 7.69 | 7.72 | 0.05 | 25.18 | 25.88 | 24.55 | 24.88 | 2.27 | 1.55 | 1.08 |
| 170.00 | 7.73 | 7.73 | 7.71 | 7.73 | 7.79 | 0.08 | 24.10 | 24.85 | 23.44 | 24.07 | 2.73 | 1.63 | 1.09 |
| 200.00 | 7.88 | 7.88 | 7.85 | 7.86 | 7.94 | 0.09 | 23.49 | 24.26 | 22.80 | 23.57 | 3.03 | 1.70 | 1.08 |
| 230.00 | 7.78 | 7.80 | 7.75 | 7.78 | 7.87 | 0.12 | 23.27 | 24.06 | 22.52 | 23.39 | 3.33 | 1.66 | 1.06 |
| 260.00 | 8.00 | 8.03 | 7.96 | 8.00 | 8.14 | 0.18 | 23.55 | 24.38 | 22.66 | 23.67 | 3.69 | 1.57 | 1.07 |
| 300.00 | 7.79 | 7.83 | 7.76 | 7.81 | 7.99 | 0.23 | 24.87 | 26.03 | 23.61 | 25.29 | 4.34 | 1.36 | 1.06 |

Outline Drawing



Outline Dimensions (inch/mm)

| A | B | C | D | E | F | G | H | wt |
|-------|-------|------|-------|------|------|------|------|-------|
| .770 | .810 | .380 | .410 | .030 | .200 | .20 | .14 | grams |
| 19.56 | 20.57 | 9.65 | 10.41 | 0.76 | 5.08 | 5.08 | 3.56 | 11.0 |



electrical schematic



Mini-Circuits®
ISO 9001 ISO 14001 AS 9100 CERTIFIED
IFIRF MICROWAVE COMPONENTS

For detailed performance specs & shopping online see web site

P.O. Box 350166, Brooklyn, New York 11235-0003 (718) 934-4500 Fax (718) 332-4661 The Design Engineers Search Engine Provides ACTUAL Data Instantly at minicircuits.com

Notes: 1. Performance and quality attributes and conditions not expressly stated in this specification sheet are intended to be excluded and do not form a part of this specification sheet. 2. Electrical specifications and performance data contained herein are based on Mini-Circuit's applicable established test performance criteria and measurement instructions. 3. The parts covered by this specification sheet are subject to Mini-Circuits standard limited warranty and terms and conditions (collectively, "Standard Terms"); Purchasers of this part are entitled to the rights and benefits contained therein. For a full statement of the Standard Terms and the exclusive rights and remedies thereunder, please visit Mini-Circuits' website at www.minicircuits.com/MCLStore/terms.jsp.

REV. A
M98898
PSC-5-1
HY/TD/CP/AM
090827