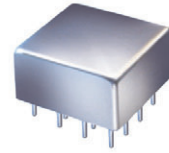


Plug-In

Power Splitter/Combiner

PSC-6-1+

6 Way-0° 50Ω 1 to 175 MHz



Maximum Ratings

Operating Temperature	-55°C to 100°C
Storage Temperature	-55°C to 100°C
Power Input (as a splitter)	1W max.
Internal Dissipation	0.5W max.
Permanent damage may occur if any of these limits are exceeded.	

Pin Connections

SUM PORT	1
PORT 1	3
PORT 2	4
PORT 3	8
PORT 4	12
PORT 5	16
PORT 6	15
GROUND	2,5,7,11,13,14
CASE GROUND	2,5,7,11,13,14
NOT USED	6,9,10

Features

- low insertion loss, 0.6 dB typ.
- high isolation, 30 dB typ.
- rugged welded case
- excellent amplitude unbalance, 0.1 dB typ.

Applications

- VHF
- radio communication
- instrumentation

CASE STYLE: C07
PRICE: \$79.45 ea. QTY. (1-9)

+ RoHS compliant in accordance with EU Directive (2002/95/EC)

The +Suffix has been added in order to identify RoHS Compliance. See our web site for RoHS Compliance methodologies and qualifications.

Electrical Specifications

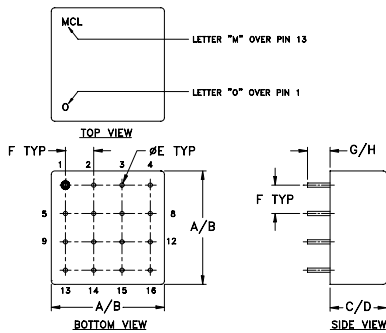
FREQ. RANGE (MHz)	ISOLATION (dB)						INSERTION LOSS (dB) ABOVE 7.8 dB						PHASE UNBALANCE (Degrees)			AMPLITUDE UNBALANCE (dB)		
	L		M		U		L		M		U		L	M	U	L	M	U
	Typ.	Min.	Typ.	Min.	Typ.	Min.	Typ.	Max.	Typ.	Max.	Typ.	Max.	Max.	Max.	Max.	Max.	Max.	Max.
f_L - f_U																		
1-175	35	25	30	23	25	18	0.6	1.2	0.6	1.1	0.6	1.3	2	4	8	0.1	0.3	0.6

L = low range [f_L to 10 f_L] M = mid range [10 f_L to $f_U/2$] U = upper range [$f_U/2$ to f_U]

Typical Performance Data

Frequency (MHz)	Insertion Loss (dB)			Amplitude Unbalance (dB)	Isolation (dB)			Phase Unbal. (deg.)	VSWR S	VSWR 1	VSWR 3
	S-1	S-2	S-3		1-2	1-3	5-6				
	1.00	8.32	8.31		8.33	0.03	33.73				
3.00	8.20	8.19	8.22	0.03	31.72	31.45	31.60	0.14	1.24	1.20	1.21
9.00	8.16	8.16	8.19	0.04	31.13	31.02	31.05	0.14	1.26	1.16	1.16
20.00	8.21	8.20	8.24	0.04	31.01	30.97	30.95	0.19	1.26	1.15	1.15
35.00	8.27	8.27	8.30	0.04	30.82	30.90	30.70	0.28	1.27	1.14	1.14
50.00	8.30	8.29	8.33	0.04	30.50	30.69	30.31	0.38	1.28	1.14	1.14
65.00	8.30	8.29	8.33	0.04	30.08	30.42	29.79	0.51	1.28	1.14	1.14
80.00	8.34	8.33	8.37	0.04	29.59	30.08	29.24	0.60	1.29	1.13	1.14
95.00	8.41	8.38	8.43	0.05	29.12	29.73	28.72	0.75	1.29	1.13	1.13
110.00	8.45	8.42	8.46	0.04	28.70	29.42	28.25	0.83	1.29	1.11	1.12
120.00	8.44	8.41	8.45	0.05	28.42	29.20	27.96	0.92	1.29	1.11	1.11
130.00	8.44	8.41	8.45	0.05	28.19	29.03	27.72	0.97	1.29	1.11	1.11
145.00	8.49	8.45	8.49	0.06	27.86	28.79	27.42	1.11	1.28	1.12	1.12
165.00	8.60	8.54	8.59	0.08	27.44	28.48	27.03	1.21	1.27	1.11	1.12
175.00	8.63	8.57	8.61	0.09	27.21	28.30	26.86	1.43	1.27	1.11	1.12

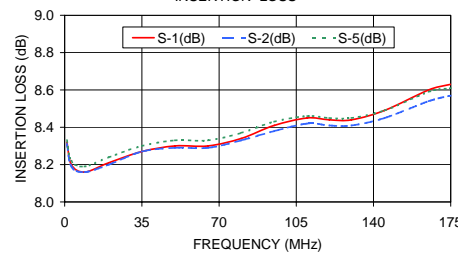
Outline Drawing



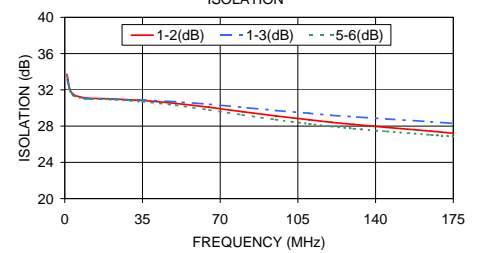
Outline Dimensions (inch/mm)

A	B	C	D	E	F	G	H	wt
.770	.810	.380	.410	.030	.200	.20	.14	grams
19.56	20.57	9.65	10.41	0.76	5.08	5.08	3.56	11.0

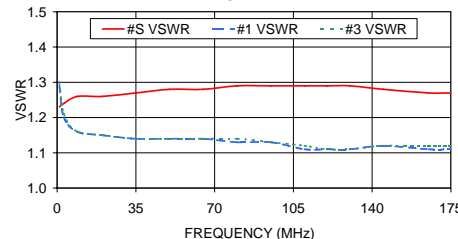
PSC-6-1+ INSERTION LOSS



PSC-6-1+ ISOLATION



PSC-6-1+ VSWR



electrical schematic



For detailed performance specs & shopping online see web site

P.O. Box 350166, Brooklyn, New York 11235-0003 (718) 934-4500 Fax (718) 332-4661 The Design Engineers Search Engine Provides ACTUAL Data Instantly at minicircuits.com

Notes: 1. Performance and quality attributes and conditions not expressly stated in this specification sheet are intended to be excluded and do not form a part of this specification sheet. 2. Electrical specifications and performance data contained herein are based on Mini-Circuit's applicable established test performance criteria and measurement instructions. 3. The parts covered by this specification sheet are subject to Mini-Circuits standard limited warranty and terms and conditions (collectively, "Standard Terms"); Purchasers of this part are entitled to the rights and benefits contained therein. For a full statement of the Standard Terms and the exclusive rights and remedies thereunder, please visit Mini-Circuits' website at www.minicircuits.com/MCLStore/terms.jsp.

REV. B
M108294
PSC-6-1+
HY/TD/CP/JAM
090827