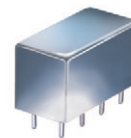


Plug-In Power Splitter/Combiner

2 Way-180° 50Ω 1 to 200 MHz

**PSCJ-2-1+
PSCJ-2-1**



CASE STYLE: A01
PRICE: \$28.20 ea. QTY. (1-9)

+ RoHS compliant in accordance with EU Directive (2002/95/EC)

The +Suffix identifies RoHS Compliance. See our web site for RoHS Compliance methodologies and qualifications.

Maximum Ratings

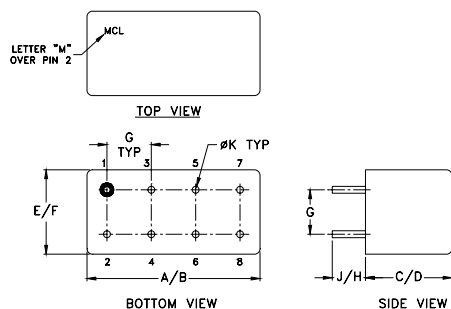
| | |
|-----------------------------|----------------|
| Operating Temperature | -55°C to 100°C |
| Storage Temperature | -55°C to 100°C |
| Power Input (as a splitter) | 1W max. |
| Internal Dissipation | 0.125W max. |

Permanent damage may occur if any of these limits are exceeded.

Pin Connections

| | |
|-------------|-----------|
| SUM PORT | 1 |
| PORT 1 | 5 |
| PORT 2 | 6 |
| GROUND | 2,3,4,7,8 |
| CASE GROUND | 2,3,4,7,8 |

Outline Drawing



Outline Dimensions (inch/mm)

| A | B | C | D | E | F |
|-------|-------|------|-------|-------|-------|
| .770 | .800 | .385 | .400 | .370 | .400 |
| 19.56 | 20.32 | 9.78 | 10.16 | 9.40 | 10.16 |
| G | H | J | K | wt | |
| .200 | .20 | .14 | .031 | grams | 5.2 |
| 5.08 | 5.08 | 3.56 | 0.79 | | |

Features

- low insertion loss, 0.5 dB typ.
- high isolation, 35 dB typ.
- excellent amplitude unbalance, 0.1 dB typ.
- excellent phase unbalance, 1 deg. typ.
- rugged shield case

Applications

- VHF
- signal processing
- push-pull amplifiers

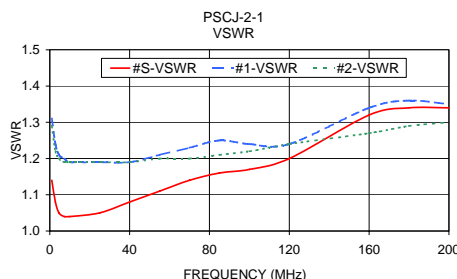
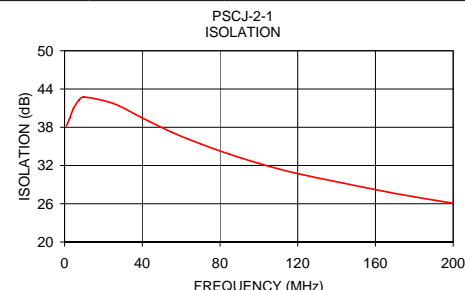
Electrical Specifications

| FREQ. RANGE (MHz) | ISOLATION (dB) | | | | | | INSERTION LOSS (dB) ABOVE 3.0 dB | | | | | | PHASE UNBALANCE (Degrees) | | | AMPLITUDE UNBALANCE (dB) | | |
|-------------------|----------------|-----|------|-----|------|-----|----------------------------------|------|------|------|------|------|---------------------------|------|------|--------------------------|------|------|
| | L | | M | | U | | L | | M | | U | | L | M | U | L | M | U |
| f_L - f_U | Typ. | Min | Typ. | Min | Typ. | Min | Typ. | Max. | Typ. | Max. | Typ. | Max. | Max. | Max. | Max. | Max. | Max. | Max. |
| 1-200 | 35 | 30 | 35 | 25 | 30 | 23 | 0.75 | 1.0 | 0.5 | 0.8 | 0.75 | 1.2 | 2 | 2.5 | 4 | 0.3 | 0.15 | 0.3 |

L = low range [f_L to $10 f_L$] M = mid range [$10 f_L$ to $f_U/2$] U = upper range [$f_U/2$ to f_U]

Typical Performance Data

| Frequency (MHz) | Insertion Loss (dB) | | Amplitude Unbalance (dB) | Isolation (dB) | Phase Unbalance (deg.) | VSWR S | VSWR 1 | VSWR 2 |
|-----------------|---------------------|------|--------------------------|----------------|------------------------|--------|--------|--------|
| | S-1 | S-2 | | | | | | |
| 1.00 | 3.77 | 3.70 | 0.07 | 38.23 | 179.69 | 1.14 | 1.31 | 1.29 |
| 2.80 | 3.56 | 3.51 | 0.05 | 39.52 | 179.74 | 1.08 | 1.24 | 1.22 |
| 4.60 | 3.49 | 3.45 | 0.03 | 40.98 | 179.84 | 1.05 | 1.21 | 1.20 |
| 7.30 | 3.46 | 3.43 | 0.03 | 42.20 | 180.11 | 1.04 | 1.20 | 1.19 |
| 10.00 | 3.45 | 3.43 | 0.02 | 42.75 | 180.01 | 1.04 | 1.19 | 1.19 |
| 25.00 | 3.48 | 3.46 | 0.02 | 41.74 | 179.72 | 1.05 | 1.19 | 1.19 |
| 40.00 | 3.52 | 3.49 | 0.03 | 39.46 | 179.46 | 1.08 | 1.19 | 1.19 |
| 55.00 | 3.55 | 3.51 | 0.04 | 37.24 | 179.22 | 1.11 | 1.21 | 1.20 |
| 70.00 | 3.57 | 3.53 | 0.04 | 35.39 | 179.03 | 1.14 | 1.23 | 1.20 |
| 85.00 | 3.59 | 3.54 | 0.05 | 33.76 | 178.85 | 1.16 | 1.25 | 1.21 |
| 100.00 | 3.61 | 3.55 | 0.06 | 32.33 | 178.59 | 1.17 | 1.24 | 1.22 |
| 120.00 | 3.63 | 3.54 | 0.09 | 30.73 | 178.37 | 1.20 | 1.24 | 1.24 |
| 160.00 | 3.79 | 3.65 | 0.15 | 28.22 | 177.87 | 1.32 | 1.34 | 1.27 |
| 180.00 | 3.79 | 3.62 | 0.17 | 27.09 | 177.67 | 1.34 | 1.36 | 1.29 |
| 200.00 | 3.75 | 3.55 | 0.20 | 26.08 | 177.40 | 1.34 | 1.35 | 1.30 |



electrical schematic



Mini-Circuits
ISO 9001 ISO 14001 AS 9100 CERTIFIED

P.O. Box 350166, Brooklyn, New York 11235-0003 (718) 934-4500 Fax (718) 332-4661 The Design Engineers Search Engine Provides ACTUAL Data Instantly at minicircuits.com

Notes: 1. Performance and quality attributes and conditions not expressly stated in this specification sheet are intended to be excluded and do not form a part of this specification sheet. 2. Electrical specifications and performance data contained herein are based on Mini-Circuit's applicable established test performance criteria and measurement instructions. 3. The parts covered by this specification sheet are subject to Mini-Circuits standard limited warranty and terms and conditions (collectively, "Standard Terms"); Purchasers of this part are entitled to the rights and benefits contained therein. For a full statement of the Standard Terms and the exclusive rights and remedies thereunder, please visit Mini-Circuits' website at www.minicircuits.com/MCLStore/terms.jsp.

REV. A
M98898
PSCJ-2-1
HY/TD/CP/AM
090824