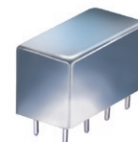


Plug-In

Frequency Mixer

RAY-1+

Level 23 (LO Power +23 dBm) 5 to 500 MHz



CASE STYLE: A01
PRICE: \$45.20 ea. QTY (1-9)

+ RoHS compliant in accordance with EU Directive (2002/95/EC)

The +Suffix has been added in order to identify RoHS Compliance. See our web site for RoHS Compliance methodologies and qualifications.

Maximum Ratings

Operating Temperature	-55°C to 100°C
Storage Temperature	-55°C to 100°C
RF Power	350mW
IF Current	40mA
Permanent damage may occur if any of these limits are exceeded.	

Pin Connections

LO	8
RF	1
IF	3,4^
GROUND	2,5,6,7
CASE GROUND	2

^pins must be connected together externally

Features

- excellent conversion loss, 6.57 dB typ.
- high isolation 40 dB typ. L-R & L-I
- rugged welded construction
- hermetically sealed

Applications

- VHF/UHF
- defense & federal communications
- aviation

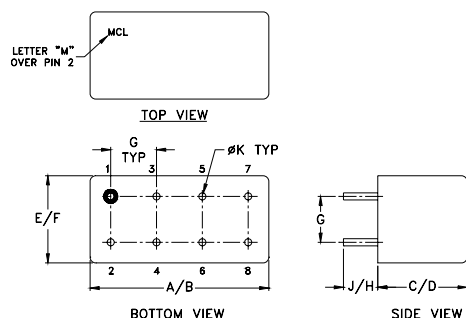
Electrical Specifications

FREQUENCY (MHz)		CONVERSION LOSS (dB)				LO-RF ISOLATION (dB)						LO-IF ISOLATION (dB)					
LO/RF	IF	Mid-Band		Total Range	Max.	L		M		U		L		M		U	
		\bar{X}	σ			Typ.	Min.	Typ.	Min.	Typ.	Min.	Typ.	Min.	Typ.	Min.		
5-500	DC-500	6.57	0.09	7.5	8.5	55	45	40	30	30	25	55	45	40	30	30	20

1 dB COMP.: +15 dBm typ.

L = low range [f_L to $10 f_L$] M = mid range [$10 f_L$ to $f_U/2$] U = upper range [$f_U/2$ to f_U]
m = mid band [$2f_L$ to $f_U/2$]

Outline Drawing



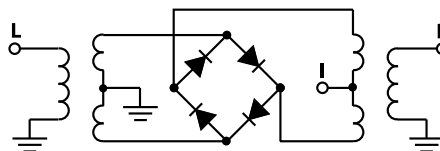
Outline Dimensions (inch/mm)

A	B	C	D	E	F
.770	.800	.385	.400	.370	.400
19.56	20.32	9.78	10.16	9.40	10.16
G	H	J	K	wt	
.200	.20	.14	.031	grams	
5.08	5.08	3.56	0.79	5.2	

Typical Performance Data

Frequency (MHz)		Conversion Loss (dB)	Isolation L-R (dB)	Isolation L-I (dB)	VSWR RF Port (:1)	VSWR LO Port (:1)
RF	LO	LO +23dBm	LO +23dBm	LO +23dBm	LO +23dBm	LO +23dBm
5.00	35.00	6.52	57.02	82.02	1.29	2.50
10.00	40.00	6.40	56.72	82.32	1.14	2.37
20.00	50.00	6.40	54.48	81.28	1.06	2.33
35.94	65.94	6.43	51.51	75.99	1.05	2.31
50.00	80.00	6.40	48.82	72.57	1.07	2.37
82.35	52.35	6.39	45.62	62.91	1.08	2.20
100.00	70.00	6.36	44.05	58.66	1.10	2.25
144.22	114.22	6.53	41.60	53.71	1.12	2.11
175.16	145.16	6.68	40.04	51.38	1.14	2.25
200.00	170.00	6.69	39.45	50.73	1.16	2.06
221.57	191.57	6.52	36.41	46.45	1.18	2.17
252.50	222.50	6.52	36.33	47.23	1.20	2.04
283.44	253.44	6.64	36.36	47.98	1.22	2.10
314.38	284.38	6.74	36.35	46.73	1.24	1.96
345.32	315.32	6.62	33.85	44.99	1.26	2.04
376.26	346.26	6.50	30.50	41.75	1.29	1.96
407.19	377.19	6.43	32.89	42.28	1.31	1.95
438.13	408.13	6.50	33.81	42.66	1.35	1.90
469.07	439.07	6.81	33.63	41.41	1.38	1.87
500.00	470.00	6.62	34.24	40.42	1.44	1.83

Electrical Schematic



Mini-Circuits
ISO 9001 ISO 14001 AS 9100 CERTIFIED

P.O. Box 350166, Brooklyn, New York 11235-0003 (718) 934-4500 Fax (718) 332-4661 The Design Engineers Search Engine Provides ACTUAL Data Instantly at minicircuits.com

IF/RF MICROWAVE COMPONENTS

For detailed performance specs & shopping online see web site

Notes: 1. Performance and quality attributes and conditions not expressly stated in this specification sheet are intended to be excluded and do not form a part of this specification sheet. 2. Electrical specifications and performance data contained herein are based on Mini-Circuit's applicable established test performance criteria and measurement instructions. 3. The parts covered by this specification sheet are subject to Mini-Circuits standard limited warranty and terms and conditions (collectively, "Standard Terms"); Purchasers of this part are entitled to the rights and benefits contained therein. For a full statement of the Standard Terms and the exclusive rights and remedies thereunder, please visit Mini-Circuits' website at www.minicircuits.com/MCLStore/terms.jsp.

REV. B
M121747
RAY-1+
DJ/TD/CP/AM
091208
Page 1 of 2

