

# Bandpass Filter

## RBP-280+

50Ω 260 to 310 MHz

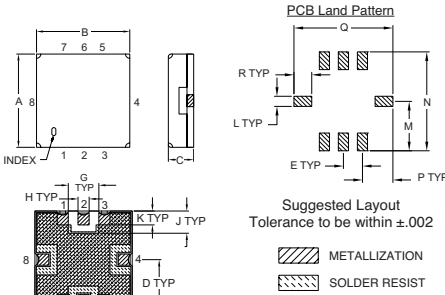
### Maximum Ratings

Operating Temperature	-40°C to 85°C
Storage Temperature	-55°C to 100°C
RF Power Input	0.5 W at 25°C

### Pin Connections

RF IN	2
RF OUT	6
GROUND	1, 3, 4, 5, 7, 8

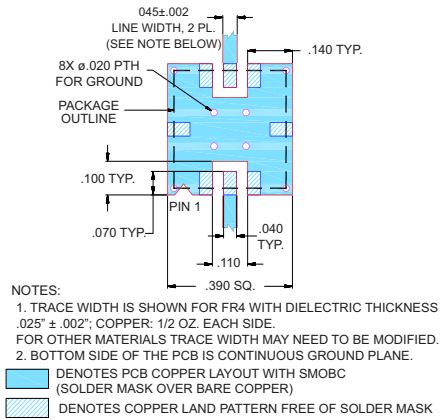
### Outline Drawing



### Outline Dimensions (inch/mm)

A	B	C	D	E	F	G	H	J
.350	.350	.100	.175	.075	.100	.110	.040	.080
8.89	8.89	2.54	4.45	1.93	2.54	2.79	1.02	2.03
K	L	M	N	P	Q	R	WT.	
.050	.040	.195	.390	.120	.390	.070	GRAM	
1.27	1.02	4.95	9.91	3.05	9.91	1.78		

### Demo Board MCL P/N: TB-332 Suggested PCB Layout (PL-176)



### Features

- Linear Phase, up to ± 6 deg. Typ @ Fc ± 30 MHz
- Good VSWR, 1.6:1 Typ @ Passband
- Small Size (0.35" X 0.35")
- Shielded case
- Aqueous washable

### Applications

- Military Radio
- Harmonic Rejection
- Transmitters/Receivers



CASE STYLE: GP731  
PRICE: \$15.95 QTY (1-9)

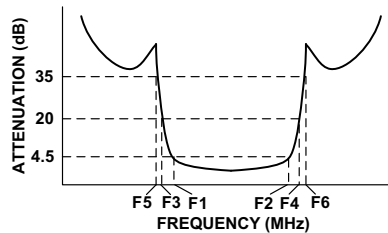
+ RoHS compliant in accordance with EU Directive (2002/95/EC)

The +Suffix has been added in order to identify RoHS Compliance. See our web site for RoHS Compliance methodologies and qualifications.

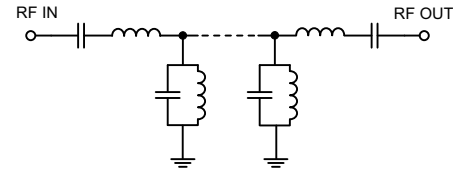
### Bandpass Filter Electrical Specifications (T<sub>AMB</sub> = 25°C)

CENTER FREQ. (MHz)	PASSBAND (MHz) (Loss < 4.5dB)	STOPBANDS (MHz)				MAXIMUM DEVIATION FROM LINEAR PHASE (deg.) Fc ± 30MHz	VSWR (:1)		
		Loss > 20dB		Loss > 35dB			Passband		Stopband
Fc	F1 - F2	F3	F4	F5	F6	Fc ± 30MHz	Typ.	Max.	Typ.
280	260 - 310	205	375	185	420 - 2000	±12	1.6	2.4	30

### Typical Frequency Response

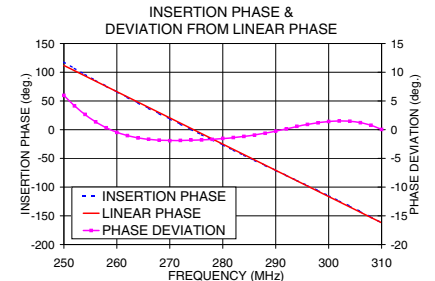
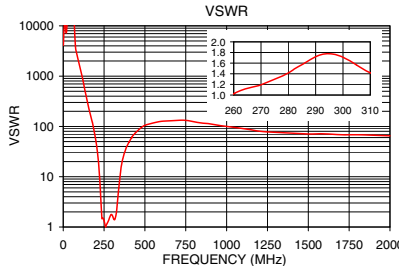
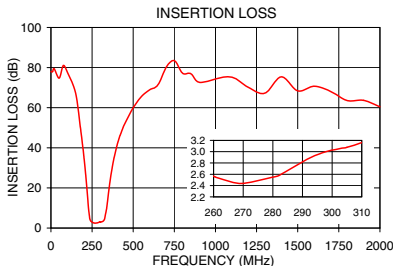


### Functional Schematic



### Typical Performance Data at 25°C

Frequency (MHz)	Insertion Loss (dB)	VSWR (:1)	Frequency (MHz)	Deviation from Linear Phase (deg.)
0.5	77.98	4076.40	250	5.97
185.0	46.30	93.42	254	2.66
205.0	31.89	39.49	258	0.33
217.0	21.40	17.82	262	-1.03
228.0	10.22	4.89	266	-1.67
236.0	4.64	1.55	270	-1.92
260.0	2.56	1.03	274	-1.80
280.0	2.55	1.41	278	-1.69
295.0	2.95	1.78	282	-1.37
300.0	3.03	1.71	286	-0.94
310.0	3.16	1.42	290	-0.25
326.0	4.48	1.98	294	0.59
339.0	10.05	5.53	298	1.20
355.0	20.78	15.92	300	1.43
375.0	31.30	29.96	302	1.51
420.0	46.22	59.81	306	1.22
1000.0	74.26	99.25	308	0.77
2000.0	60.49	65.03	310	0.04



P.O. Box 350166, Brooklyn, New York 11235-0003 (718) 934-4500 Fax (718) 332-4661 For detailed performance specs & shopping online see Mini-Circuits web site



The Design Engineers Search Engine Provides ACTUAL Data Instantly From MINI-CIRCUITS At: [www.minicircuits.com](http://www.minicircuits.com)

IF/RF MICROWAVE COMPONENTS