

Bandpass Filter

RBP-98+

50Ω 75 to 131 MHz

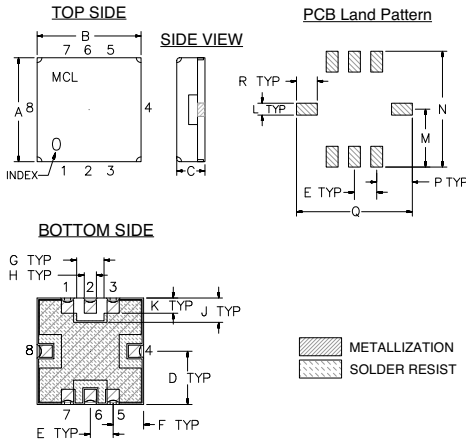
Maximum Ratings

Operating Temperature	-40°C to 85°C
Storage Temperature	-55°C to 100°C
RF Power Input	0.5W at 25°C

Pin Connections

RF IN	2
RF OUT	6
GROUND	1, 3, 4, 5, 7, 8

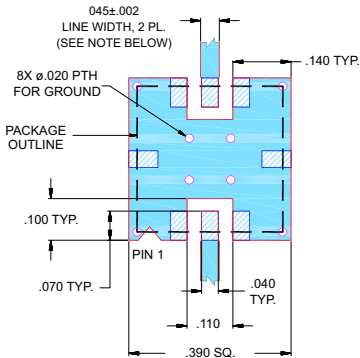
Outline Drawing



Outline Dimensions (inch/mm)

A	B	C	D	E	F	G	H	J	wt.
.350	.350	.100	.175	.075	.100	.090	.040	.080	grams
8.89	8.89	2.54	4.45	1.93	2.54	2.29	1.02	2.03	
K	L	M	N	P	Q	R			
.050	.040	.195	.390	.120	.390	.070			
1.27	1.02	4.95	9.91	3.05	9.91	1.78			

Demo Board MCL P/N: TB-332 Suggested PCB Layout (PL-176)



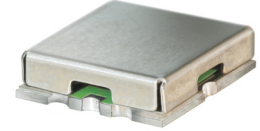
- NOTES:
- TRACE WIDTH IS SHOWN FOR FR4 WITH DIELECTRIC THICKNESS .025" ± .002"; COPPER: 1/2 OZ. EACH SIDE. FOR OTHER MATERIALS TRACE WIDTH MAY NEED TO BE MODIFIED.
 - BOTTOM SIDE OF THE PCB IS CONTINUOUS GROUND PLANE.
- DENOTES PCB COPPER LAYOUT WITH SMOBC (SOLDER MASK OVER BARE COPPER)
- DENOTES COPPER LAND PATTERN FREE OF SOLDER MASK

Features

- Good VSWR, 1.3:1 Typ @ Pass Band
- Small Size(0.35" X 0.35")

Applications

- Navigation
- Harmonic Rejection
- Transmitters/Receivers



CASE STYLE: GP731
PRICE: \$15.95 ea. QTY (1-9)

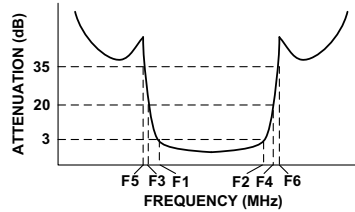
+ RoHS compliant in accordance with EU Directive (2002/95/EC)

The +suffix has been added in order to identify RoHS Compliance. See our web site for RoHS Compliance methodologies and qualifications.

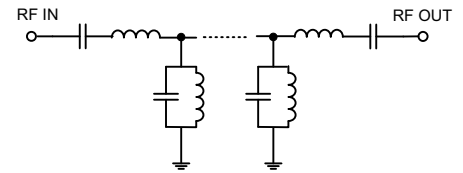
Bandpass Filter Electrical Specifications (T_{AMB} = 25°C)

CENTER FREQ. (MHz)	PASSBAND (MHz) (Loss < 3dB) F1 - F2	STOPBANDS (MHz)				VSWR (:1)	
		Loss > 20dB F3 F4	Loss > 35dB F5 F6	Passband Max.	Stopband Typ.		
103	75 - 131	55 170	45 210 - 2000	1.7	18		

Typical Frequency Response



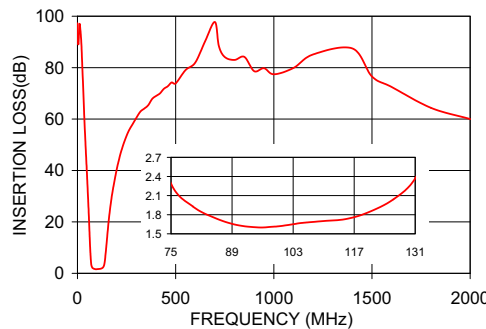
Functional Schematic



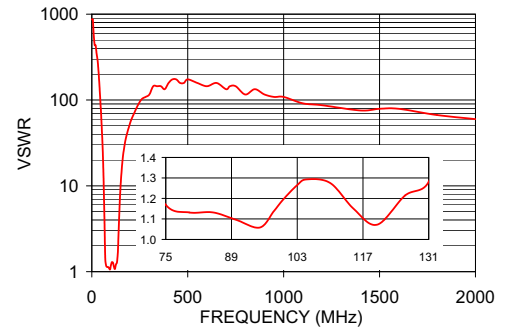
Typical Performance Data at 25°C

Frequency (MHz)	Insertion Loss (dB)	VSWR (:1)
0.3	97.25	868.59
20	88.97	434.30
45	44.01	91.43
55	27.51	33.42
62	14.67	10.75
66	7.56	3.83
70	3.49	1.40
75	2.29	1.17
103	1.65	1.26
131	2.37	1.28
137	3.66	1.98
143	7.29	4.56
150	13.21	10.19
170	27.25	28.96
210	43.79	62.05
650	90.23	157.93
1000	77.43	108.58
2000	60.02	59.91

RBP-98+ INSERTION LOSS



RBP-98+ VSWR



P.O. Box 350166, Brooklyn, New York 11235-0003 (718) 934-4500 Fax (718) 332-4661 For detailed performance specs & shopping online see Mini-Circuits web site



The Design Engineers Search Engine Provides ACTUAL Data Instantly From MINI-CIRCUITS At: www.minicircuits.com

RF/IF MICROWAVE COMPONENTS

REV. OR
M104389
EDR-7833AU
RBP-98+
RAV/URJ
080113
Page 1 of 1