

# High Pass Filter

## RHP-260+

50Ω 300 to 2200 MHz

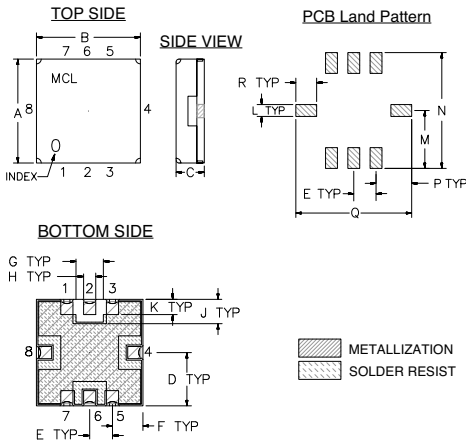
### Maximum Ratings

Operating Temperature	-40°C to 85°C
Storage Temperature	-55°C to 100°C
RF Power Input	0.5W at 25°C

### Pin Connections

INPUT	2
OUTPUT	6
GROUND	1, 3, 4, 5, 7, 8

### Outline Drawing



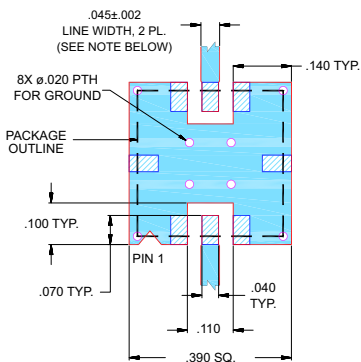
### Outline Dimensions (inch/mm)

A	B	C	D	E	F	G	H	J
.350	.350	.100	.175	.075	.100	.090	.040	.080
8.89	8.89	2.54	4.45	1.93	2.54	2.29	1.02	2.03

K	L	M	N	P	Q	R	wt.
.050	.040	.195	.390	.120	.390	.070	grams
1.27	1.02	4.95	9.91	3.05	9.91	1.78	0.25

Demo Board MCL P/N: TB-332  
Suggested PCB Layout (PL-176)



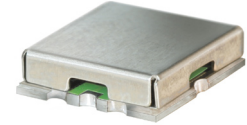
- NOTES:
- TRACE WIDTH IS SHOWN FOR FR4 WITH DIELECTRIC THICKNESS .025 ± .002"; COPPER: 1/2 OZ. EACH SIDE. FOR OTHER MATERIALS TRACE WIDTH MAY NEED TO BE MODIFIED.
  - BOTTOM SIDE OF THE PCB IS CONTINUOUS GROUND PLANE.
- Legend:  
 DENOTES PCB COPPER LAYOUT WITH SMOBC (SOLDER MASK OVER BARE COPPER)  
 DENOTES COPPER LAND PATTERN FREE OF SOLDER MASK

### Features

- Low Insertion Loss, 0.5dB Typ @ Passband
- High Rejection
- Shielded case
- Aqueous washable

### Applications

- Transmitters/Receivers
- Sub-Harmonic Rejection
- Military communications



CASE STYLE: GP731  
PRICE: \$13.95 ea. QTY (1-9)

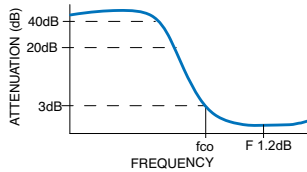
+ RoHS compliant in accordance with EU Directive (2002/95/EC)

The +Suffix has been added in order to identify RoHS Compliance. See our web site for RoHS Compliance methodologies and qualifications.

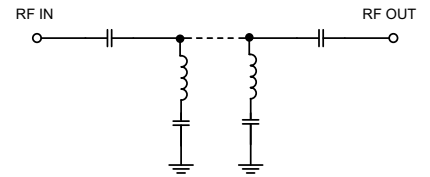
### Band Pass Filter Electrical Specifications (T<sub>AMB</sub> = 25°C)

STOPBAND (MHz)	f <sub>co</sub> , MHz Nom.	PASSBAND (MHz)	VSWR (:1)
(Loss > 40dB)	(Loss 3dB)	(Loss < 1.2dB)	Stopband Typ. Passband Typ.
DC - 145	260	300 - 2200	20 1.3

### Typical Frequency Response

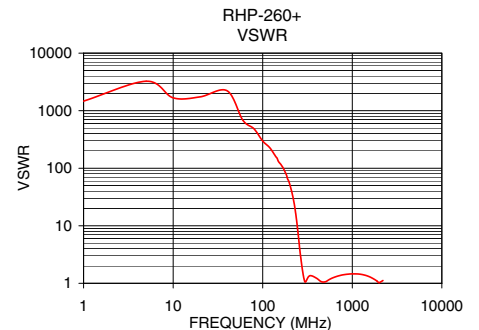
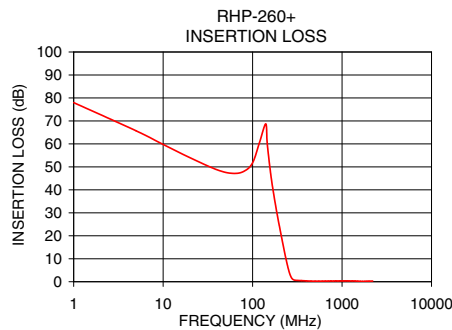


### Functional Schematic



### Typical Performance Data at 25°C

Frequency (MHz)	Insertion Loss (dB)	VSWR (:1)
1.0	77.96	1465.81
20.0	53.97	1737.18
60.0	47.15	683.17
145.0	61.41	149.09
160.0	46.44	115.91
190.0	28.47	64.85
220.0	15.70	28.97
240.0	8.70	11.67
250.0	5.78	6.64
260.0	3.48	3.81
270.0	1.95	2.32
280.0	1.13	1.57
300.0	0.62	1.05
500.0	0.23	1.06
1000.0	0.34	1.46
1500.0	0.25	1.33
2000.0	0.23	1.03
2200.0	0.31	1.12



P.O. Box 350166, Brooklyn, New York 11235-0003 (718) 934-4500 Fax (718) 332-4661 For detailed performance specs & shopping online see Mini-Circuits web site



The Design Engineers Search Engine Provides ACTUAL Data Instantly From MINI-CIRCUITS At: [www.minicircuits.com](http://www.minicircuits.com)

RF/IF MICROWAVE COMPONENTS

REV. OR  
M114801  
EDR-8722UF1  
RHP-260+  
URJ/RAV  
071205  
Page 1 of 1