

High Pass Filter

RHP-395+

50Ω 650 to 2750 MHz

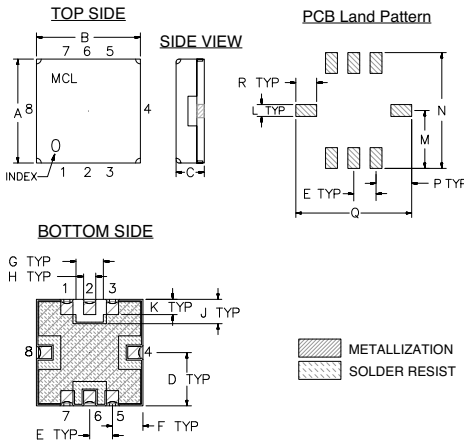
Maximum Ratings

Operating Temperature	-40°C to 85°C
Storage Temperature	-55°C to 100°C
RF Power Input	0.5W at 25°C

Pin Connections

INPUT	2
OUTPUT	6
GROUND	1, 3, 4, 5, 7, 8

Outline Drawing

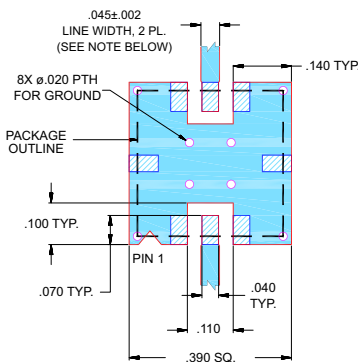


Outline Dimensions (inch/mm)

A	B	C	D	E	F	G	H	J
.350	.350	.100	.175	.075	.100	.090	.040	.080
8.89	8.89	2.54	4.45	1.93	2.54	2.29	1.02	2.03

K	L	M	N	P	Q	R	wt.
.050	.040	.195	.390	.120	.390	.070	grams
1.27	1.02	4.95	9.91	3.05	9.91	1.78	0.25

Demo Board MCL P/N: TB-332
Suggested PCB Layout (PL-176)



- NOTES:
- TRACE WIDTH IS SHOWN FOR FR4 WITH DIELECTRIC THICKNESS .025 ± .002"; COPPER: 1/2 OZ. EACH SIDE. FOR OTHER MATERIALS TRACE WIDTH MAY NEED TO BE MODIFIED.
 - BOTTOM SIDE OF THE PCB IS CONTINUOUS GROUND PLANE.

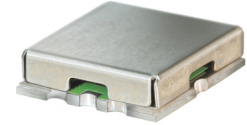
- DENOTES PCB COPPER LAYOUT WITH SMOBC (SOLDER MASK OVER BARE COPPER)
- DENOTES COPPER LAND PATTERN FREE OF SOLDER MASK

Features

- Low Insertion Loss, 0.5dB Typ @ Passband
- High Rejection
- Shielded case
- Aqueous washable

Applications

- Transmitters/Receivers
- Sub-Harmonic Rejection
- Military communications



CASE STYLE: GP731
PRICE: \$13.95 ea. QTY (1-9)

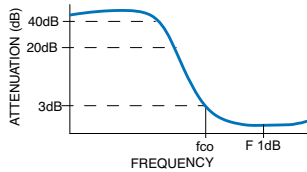
+ RoHS compliant in accordance with EU Directive (2002/95/EC)

The +Suffix has been added in order to identify RoHS Compliance. See our web site for RoHS Compliance methodologies and qualifications.

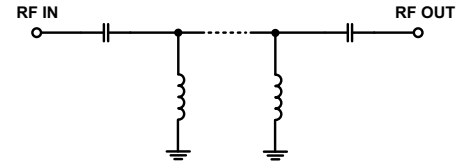
High Pass Filter Electrical Specifications (T_{AMB} = 25°C)

STOPBAND (MHz)		f _{co} , MHz Nom.	PASSBAND (MHz)	VSWR (:1)	
(Loss > 40dB)	(Loss > 20dB)	(Loss 3dB)	(Loss < 1dB)	Stopband Typ.	Passband Typ.
DC - 210	DC - 290	395	650 - 2750	18	1.2

Typical Frequency Response

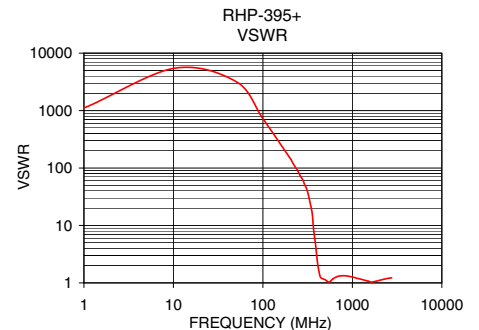
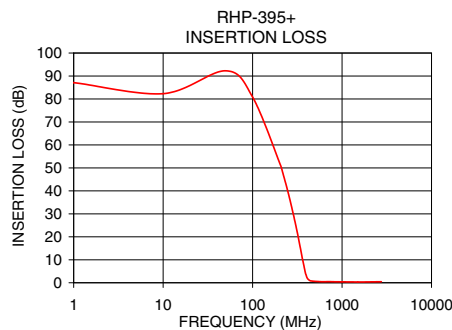


Functional Schematic



Typical Performance Data at 25°C

Frequency (MHz)	Insertion Loss (dB)	VSWR (:1)
1.0	87.12	1118.54
50.0	92.26	3204.06
100.0	80.83	725.01
207.0	50.78	139.37
210.0	49.95	133.36
280.0	31.20	61.88
290.0	28.60	53.41
320.0	20.79	35.83
350.0	13.01	18.89
370.0	8.33	8.21
395.0	3.48	3.51
410.0	1.88	2.14
470.0	0.71	1.18
650.0	0.47	1.25
1000.0	0.39	1.26
1500.0	0.33	1.07
2250.0	0.40	1.16
2750.0	0.46	1.22



P.O. Box 350166, Brooklyn, New York 11235-0003 (718) 934-4500 Fax (718) 332-4661 For detailed performance specs & shopping online see Mini-Circuits web site



The Design Engineers Search Engine Provides ACTUAL Data Instantly From MINI-CIRCUITS At: www.minicircuits.com

RF/IF MICROWAVE COMPONENTS

REV. OR
M114872
EDR-8699U
RHP-395+
URJ/RAV
071204
Page 1 of 1