

# Low Pass Filter

## RLP-264+

50Ω DC to 264 MHz

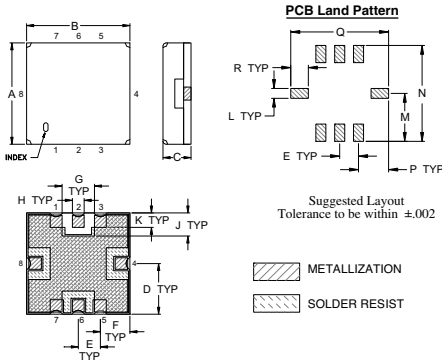
### Maximum Ratings

Operating Temperature	-40°C to 85°C
Storage Temperature	-55°C to 100°C
RF Power Input	0.5W Max

### Pin Connections

RF IN	2
RF OUT	6
GROUND	1, 3, 4, 5, 7, 8

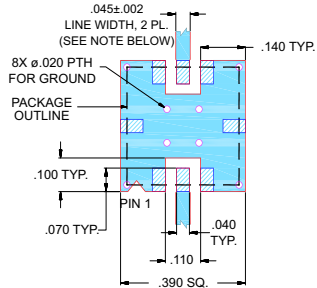
### Outline Drawing



### Outline Dimensions (inch/mm)

A	B	C	D	E	F	G	H	J
.350	.350	.100	.175	.075	.100	.110	.040	.080
8.89	8.89	2.54	4.45	1.93	2.54	2.79	1.02	2.03
K	L	M	N	P	Q	R	wt.	
.050	.040	.195	.390	.120	.390	.070	grams	
1.27	1.02	4.95	9.91	3.05	9.91	1.78	0.25	

### Demo Board MCL P/N: TB-332 Suggested PCB Layout (PL-176)



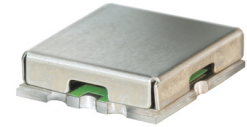
- NOTES: 1. TRACE WIDTH IS SHOWN FOR FR4 WITH DIELECTRIC THICKNESS .025±.002; COPPER: 1/2 OZ. EACH SIDE.  
FOR OTHER MATERIALS TRACE WIDTH MAY NEED TO BE MODIFIED.  
2. BOTTOM SIDE OF THE PCB IS CONTINUOUS GROUND PLANE.
- DENOTES PCB COPPER LAYOUT WITH SMOBC (SOLDER MASK OVER BARE COPPER)
  - DENOTES COPPER LAND PATTERN FREE OF SOLDER MASK

### Features

- High rejection
- Sharp Insertion Loss roll off
- Excellent VSWR, 1.2:1 typ. @ Passband
- Aqueous washable

### Applications

- Wireless communications
- Receivers / Transmitters



CASE STYLE: GP731  
PRICE: \$7.95 ea. QTY (10-49)

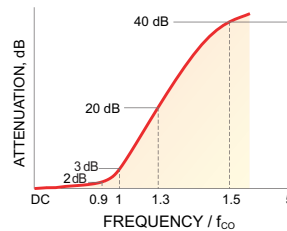
**+ RoHS compliant in accordance with EU Directive (2002/95/EC)**

The +Suffix has been added in order to identify RoHS Compliance. See our web site for RoHS Compliance methodologies and qualifications.

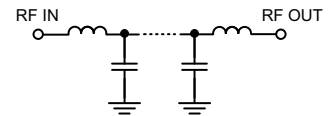
### Low Pass Filter Electrical Specifications (T<sub>AMB</sub> = 25°C)

PASSBAND (MHz)	f <sub>co</sub> , MHz Nom.	STOPBAND (MHz)		VSWR (:1)	
		(Loss > 20dB)	(Loss > 40dB)	Passband Typ.	Stopband Typ.
DC - 264	288	365 - 425	425 - 1500	1.2	20

### Typical Frequency Response

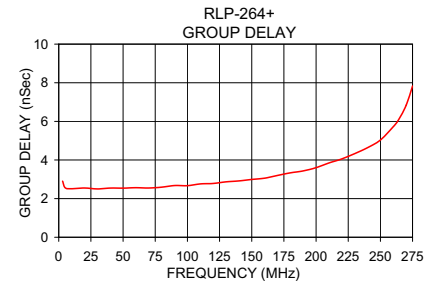
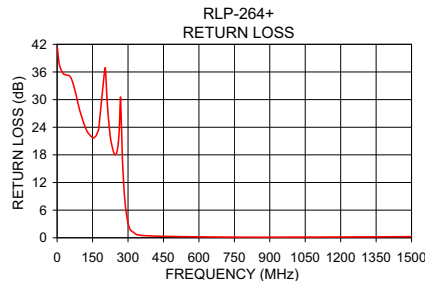
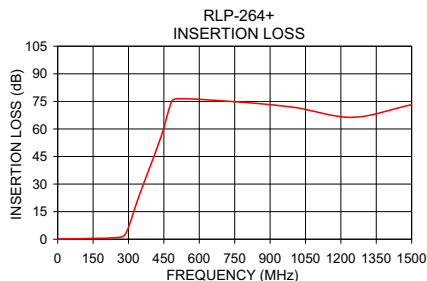


### Functional Schematic



### Typical Performance Data at 25°C

Frequency (MHz)	Insertion Loss (dB)		Return Loss (dB)	Frequency (MHz)	Group Delay (nSec)
	$\bar{x}$	$\sigma$			
0.5	0.08	0.07	40.94	3.0	2.90
50.0	0.19	0.07	35.24	5.0	2.56
80.0	0.26	0.07	31.06	10.0	2.51
125.0	0.38	0.07	23.29	30.0	2.50
150.0	0.45	0.07	21.73	50.0	2.54
202.0	0.58	0.07	36.85	70.0	2.55
264.0	1.09	0.08	24.64	90.0	2.68
276.0	1.52	0.10	17.67	100.0	2.67
288.0	3.07	0.21	7.44	120.0	2.79
300.0	6.45	0.33	3.13	140.0	2.92
311.0	10.57	0.37	1.62	160.0	3.06
335.0	19.87	0.37	0.71	190.0	3.44
365.0	30.57	0.37	0.48	200.0	3.60
425.0	51.05	0.76	0.36	220.0	4.05
500.0	76.32	8.01	0.27	240.0	4.64
1000.0	71.79	6.79	0.14	250.0	5.03
1250.0	66.32	2.76	0.18	264.0	6.07
1500.0	73.26	6.64	0.25	275.0	7.83



P.O. Box 350166, Brooklyn, New York 11235-0003 (718) 934-4500 Fax (718) 332-4661 For detailed performance specs & shopping online see Mini-Circuits web site



The Design Engineers Search Engine Provides ACTUAL Data Instantly From MINI-CIRCUITS At: [www.minicircuits.com](http://www.minicircuits.com)

RF/IF MICROWAVE COMPONENTS

REV. OR  
M112722  
EDR-8680U  
RLP-264+  
URJ/RAV  
071025  
Page 1 of 1