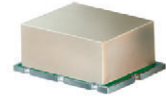


High IP3 Frequency Mixer

SYM-25DHW+ SYM-25DHW

Level 17 (LO Power +17 dBm) 80 to 2500 MHz



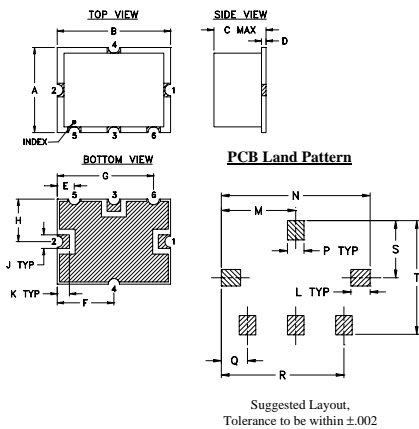
Maximum Ratings

Operating Temperature	-40°C to 85°C
Storage Temperature	-55°C to 100°C
RF Power	200mW
IF Current	40mA
Permanent damage may occur if any of these limits are exceeded.	

Pin Connections

LO	2
RF	1
IF	3
GROUND	4,5,6

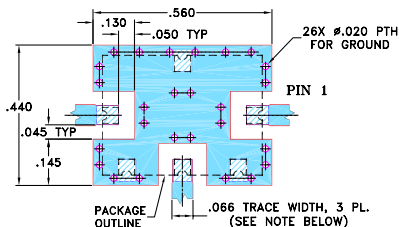
Outline Drawing



Outline Dimensions (inch/mm)

A	B	C	D	E	F	G	H	J	K
.38	.50	.23	.020	.075	.250	.425	.187	.050	.050
9.65	12.70	5.84	0.51	1.91	6.35	10.80	4.75	1.27	1.27
L	M	N	P	Q	R	S	T	wt.	
.070	.270	.540	.060	.095	.445	.208	.415	grams	
1.78	6.86	13.72	1.52	2.41	11.30	5.28	10.54	0.8	

Demo Board MCL P/N: TB-12 Suggested PCB Layout (PL-079)



Features

- wide bandwidth, 80 to 2500 MHz
- low conversion loss, 6.4 dB typ.
- high IP3, 30 dBm typ.
- good L-R isolation, 37 dB typ.; & L-I isolation, 36 dB typ.

Applications

- cellular
- PCN
- ISM/GPS
- satellite distribution

CASE STYLE: TTT167
PRICE: \$9.95 ea. QTY (10-49)

+ RoHS compliant in accordance with EU Directive (2002/95/EC)

The +Suffix identifies RoHS Compliance. See our web site for RoHS Compliance methodologies and qualifications.

Electrical Specifications

FREQUENCY (MHz)	CONVERSION LOSS* (dB)	LO-RF ISOLATION (dB)			LO-IF ISOLATION (dB)			IP3 at center band (dBm)						
		L	M	U	L	M	U							
80-2500	DC-1000*	46	29	37	25	35	20	38	26	33	24	36	20	30

1 dB COMP: +14 dBm typ.

*Conversion loss increases up to 6 dB higher as IF frequency decreases from 5MHz to DC.

L = low range [f_l to $10 f_l$]

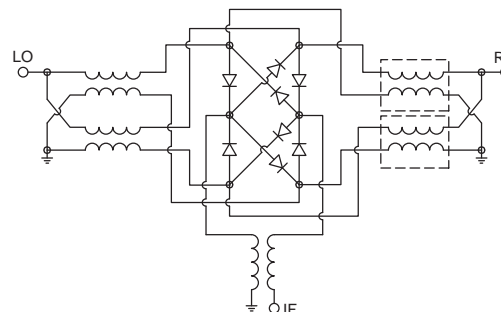
M = mid range [$10 f_l$ to $f_u/2$]

U = upper range [$f_u/2$ to f_u]

Typical Performance Data

Frequency (MHz)	Conversion Loss (dB)		Isolation L-R (dB)		Isolation L-I (dB)		VSWR RF Port (:1)		VSWR LO Port (:1)	
	RF	LO	LO +17dBm	LO +17dBm	LO +17dBm	LO +17dBm	LO +17dBm	LO +17dBm		
80.10	150.10	6.19	62.25	39.40	1.17	1.51				
100.10	170.10	6.03	66.01	39.41	1.17	1.50				
200.10	270.10	6.10	72.25	39.13	1.19	1.50				
300.10	370.10	6.10	64.46	39.58	1.21	1.51				
400.10	470.10	6.06	55.78	40.34	1.27	1.49				
500.10	570.10	6.10	53.22	40.62	1.35	1.48				
653.04	723.04	6.18	53.66	41.52	1.52	1.36				
736.86	806.86	6.23	55.60	41.42	1.62	1.28				
820.69	890.69	6.21	51.51	39.18	1.75	1.25				
904.51	974.51	6.22	50.02	37.99	1.90	1.23				
1000.10	1070.10	6.18	49.68	37.39	2.07	1.21				
1239.81	1309.81	6.49	43.82	35.23	2.48	1.10				
1407.45	1393.63	6.66	42.30	34.95	2.58	1.07				
1500.10	1477.45	6.59	41.52	35.19	2.68	1.06				
1742.75	1570.10	6.78	40.80	36.78	2.88	1.10				
1826.57	1812.75	7.01	48.77	43.06	3.13	1.26				
2000.10	1896.57	7.22	52.54	46.82	2.90	1.32				
2329.51	2231.86	7.68	44.22	40.04	2.26	1.56				
2413.34	2399.51	7.54	39.54	34.12	1.97	1.70				
2500.10	2483.34	7.55	38.42	32.57	1.86	1.74				

Electrical Schematic



Mini-Circuits
ISO 9001 ISO 14001 AS 9100 CERTIFIED

For detailed performance specs & shipping online see web site

P.O. Box 350166, Brooklyn, New York 11235-0003 (718) 934-4500 Fax (718) 332-4661 The Design Engineers Search Engine Provides ACTUAL Data Instantly at minicircuits.com

IF/RF MICROWAVE COMPONENTS

Notes: 1. Performance and quality attributes and conditions not expressly stated in this specification sheet are intended to be excluded and do not form a part of this specification sheet. 2. Electrical specifications and performance data contained herein are based on Mini-Circuit's applicable established test performance criteria and measurement instructions. 3. The parts covered by this specification sheet are subject to Mini-Circuit's standard limited warranty and terms and conditions (collectively, "Standard Terms"); Purchasers of this part are entitled to the rights and benefits contained therein. For a full statement of the Standard Terms and the exclusive rights and remedies thereunder, please visit Mini-Circuit's website at www.minicircuits.com/MCLStore/terms.jsp.

REV. E
M112207
SYM-25DHW
EDR-5073
DJ/TD/AM
091006
Page 1 of 2

Performance Charts

